

Pohnpei Studies Reader

Nukuoro History



Pohnpei State Department of Education

Preface

This reader was developed as the first series of the Pohnpei State Department of Education's "Pohnpei Studies Reader" series in collaboration with NGO Pasifika Renaissance to enable Nukuoroan students to learn their history as part of the Pohnpei Studies curriculum. The production of this reader was funded by UNESCO's Participation Programme, which was administered by the FSM Office of National Archives, Historic Preservation, and Culture.

We would like to thank Pastor Mark Sebastian, Pastor Koisimy Rudolf, and Mr. McKinley Ezekias for their translation, Mr. Garry Scott LLB (Hons.) for proofreading, Ms. Nono Toyoda for graphic work, Nukuoro Municipal Office (Chief Magistrate Senard Leopold), Ms. Ailina Ezekias (Kolonía Elementary School) for their logistical assistance, and Rautenstrauch-Joest Museum for permitting us to use some contents from Jeschke (1913) in this reader.

References

- Aitel, n.d. Translation Aitel's book, in Eastern Carolines Field Notes, John L. Fischer, Tozzer Library, Harvard University.
- Carson, Mike T., 2014. *First Settlement of Remote Oceania: Earliest Sites in the Mariana Islands*. Springer: New York.
- Eilers, Anneliese, 1934. *Inseln um Ponape*. In Georg Thilenius (ed.), *Ergebnisse der Sudsee Expedition 1908-1910*, 2, B, 8. Hamburg: Friederichsen, De Gruyter.
- Green, Roger C., 1970. Settlement pattern archaeology in Polynesia. In Green, R.C., and M. Kelly (eds.), *Studies in Oceanic Culture History 1*. Pacific Anthropological Records 11. Honolulu: Bernice P. Bishop Museum, pp. 13-22.
- Gehring, Birgitt, 2002. *Rohng Mwahu Leledohng Pohnpei: Poadoapoad en Minimin en Mwomwohdiso en Kraiss nan Pohnpei 1852-2002*. Pohnpei: Good News Press.
- Jeschke, Carl, 1913 [2013]. History of the Nukuoro Islanders (eastern Caroline Islands), recorded during several sojourns between 1910 and 1913. In C. Kaufmann and O. Wick (eds), *Nukuoro: Sculptures from Micronesia*. Basel: Fondation Beyeler, Hirmer, pp. 224-239.

- Kubary, Jan, 1900. *Beitrag sur Kenntnis der Nukuoro—oder Monteverde-Inseln*. Mitteilungen der Geographischen Gesellschaft in Hamburg, XVI.
- Ludwig, Tashiro, 2017. Account of the Female Chief Kandeisi, Nukuoro. *YouTube*, uploaded by NGO Pasifika Renaissance, 13 August 2021, https://www.youtube.com/watch?v=nJcBROOy3_Q&list=PL7c0z1tMBDqAr-22rNOnny94-j1kZ0e3&index=15.
- Theode-Arora, Hilke, 2013. German sources on Nukuoro and the ancestor statues: Kubary, Jeschke and the Hamburg South Sea Expedition. In C. Kaufmann and O. Wick (eds), *Nukuoro: Sculptures from Micronesia*. Basel: Fondation Beyeler, Hirmer, pp. 44–59.

Table of Contents

1. DE HAI O TAHI DANGADA NE DAU AI I NUKUORO	1
1.1. De ngalue taamada mai gi lote Pacific	1
1.2. De lua ngalue mai gi lote Pacific	2
2. DE HAI E NNOHO HAGABUNI MADE MOULI AI.....	6
2.1. Hagasaalunga	6
2.2. Aligi Takotonga	6
2.3. Aligi Hodooligi	9
2.4. Haingaa hai daumaha madagidagi	11
3. MEE MADAGIDAGI.....	15
3.1. Taamada o Nukuoro	15
3.2. Dehee de henua taamada	17
3.3. De dae mai o Vave gi Nukuoro.....	18
3.4. Te helongoi magava Vave ma dana ganimua Veideuluagi	20
3.5. Gilaadeu degau ne taumai hooou gide henua, ama longo o Veideuluagi	22
3.6. De sui ange a Vave ama dono hagaodi.....	23
3.7. De moni ne humai i Hiti (1).....	25
3.8. De moni ne humai i Hiti (2).....	27
3.9. Denga moni ne loomai i Kiribati.....	29
3.10. De vaga mai Kiribati	30
3.11. De vaga mai Marshall.....	31
3.12. De vaga mai Onotoa	32
3.13. Dahi hai e tala ai.....	32
3.14. De moni mai Yap	34
3.15. De moni mai Sonsorol	34
3.16. De vaga laumalie.....	35
3.17. De moni mai Namoluk	35
3.18. De vaga mai Marshall ide ngadau 1870	36
3.19. Aligi Hodooligi go Kandeisi.....	38
3.20. Aligi Hodooligi go Lekka.....	39
Image Credits	43

1. DE HAI O TAHI DANGADA NE DAU AI I NUKUORO

1.1. De ngalue taamada mai gi lote Pacific

De *archaeology*¹ go tangada e sala made hagadonu de mouli ome e ilalo de gelegele, de *linguistics*² go de gau e hagadonu de mouli odenga baasanga, aama *DNA study*.³ Bolo degau nei se lua hagabuulingaa dangada ne loomai i momme o Asia gi llotte Pacific. Luu hagabuulinga nei ne loomai i masovaa geegee, agai olaadeu mouli, dahulinga, muna, ma haingaa mee e dagodo geegee hogi.

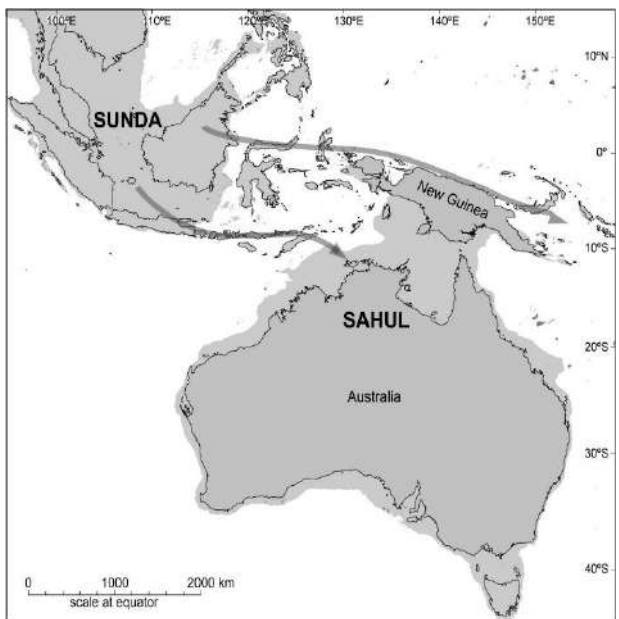
Degau sailago madagidagi ne loomai baasi Southeast Asia ga hulo gi Australia aama New Guinea i hanu 50,000 ngadau imua loo. De masovaa nei gai denga vai i luubido o henuailalo gu makaga ide maluulu e hagaingoo ange laa bolo gode “*ice age*,” ga hidimai ai laa de lausedi ide mmao gee ide henua. Dagodo bei dengaa henua o Malaysia ma Indonesia e pigi ange donuhuu gide henua laumalie o Asia, agai dono ingoo go “Sunda.” Agai dengaa modu o New Guinea ma Australia e pigi ange hogi ga hagaduu age ai de henua laanui go “Sahul.” E deai loo golea lanea made nnui e sailago saele ai i denga masovaa laa, agai nimee donuhuu be ni moni vaaligi ma laaba alaadeu e sailago saele ai ilotenga taivaaligi i magovaa Sunda ma Sahul. Dengaa sailago nei guse tae adu loo hogi gi Solomon Islands, gai gilaadeu gu te maua ide duudagi adu i hiidinga ode laumalie de lausedi io laadeu magovaa ma henua ange laa. Gilaadeu e ssala made hagabudu denga manu mouli i lausedi ma hongga de henua (bei denga

¹ *Archaeology* gode saalangaa mee made hai gi iloo dagodo ode mouli o dangada mai madagidagi mai i denga mee alaadeu ne geli age mai ilalo de henua.

² *Linguistics* gode saalangaa mee made hai gi iloo denga hagadaangaa muna basa bego muna geegee. Ga hagaheloongoi denga muna madagidagi ange gi muna iai nei e tilo ai olaadeu hebaa made mmao geegee.

³ *DNA* gode saalangaa mee made hai gi iloo mee i lodo angaanga o dangada mai dahi atangada gi dahi addangada. Bei denga ivi madagidagi ama denga ivi ilote masovaa baamai, gu maua ai loo gi iloo dagodo ode ngaungaue saele o dangada madagidagi mai dahi mommee gi dahi mommee.

manu dolodolo, ma manu llele, denga bule ma mamu) aama de haghagi denga hua manu gai i hongade henua. Olaadeu mommee noho i masovaa laa go lodo henua, agai gilaadeu e ngalungalue saele gi dahi mommee ma dahi mommee. Dagodo be gilaadeu e noho saele i lodo hagabuulinga vaaligiligi, agumade e hai huaabodu. Gilaadeu e haihegau i golea ne hai mai i dengaa hadu. Degau nei e ssomo podo, giliuliuli, agai e vinivini olaadeu ngaangailu. Meenei go denga dubuna o degau e hagaingoo ange laa bolo go *Australian Aborigines* aama hanu dangada o Melanesian, made hilo ange gi hanu dangada loomai houu.



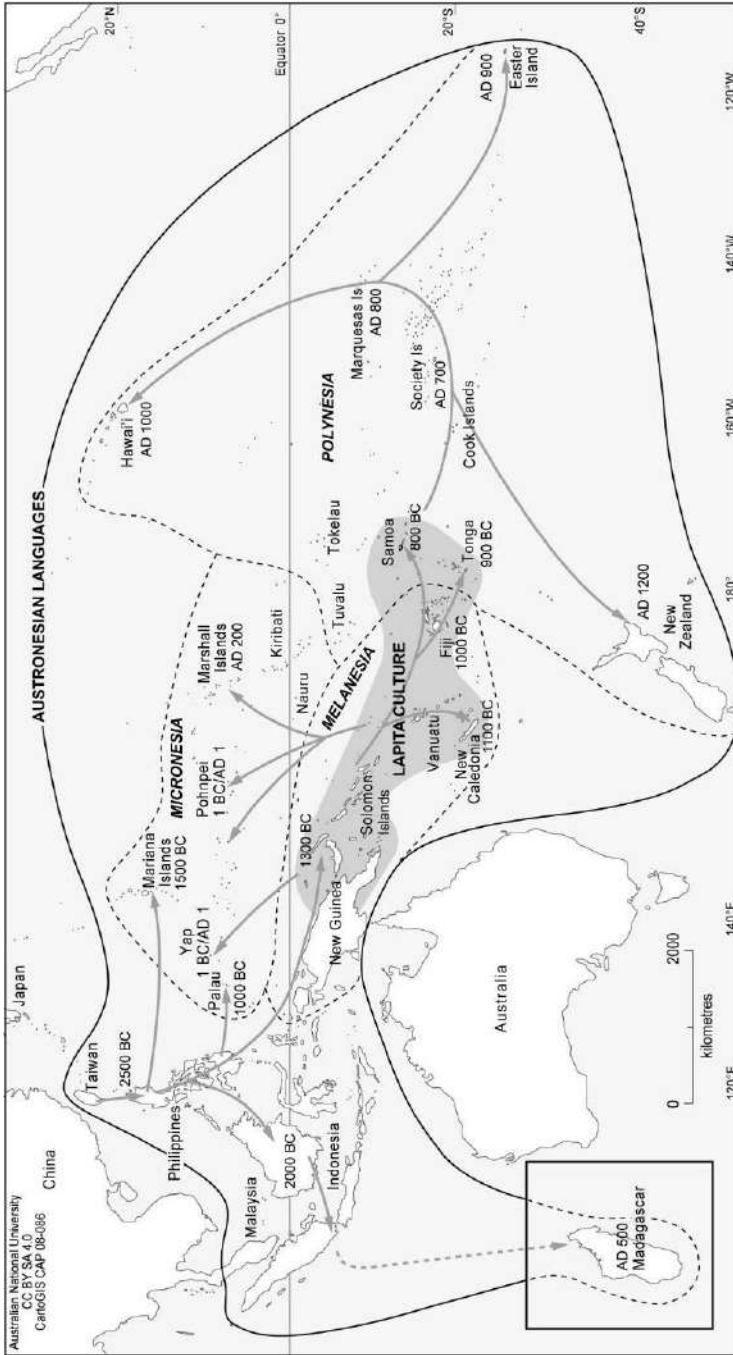
De loomai ode hagabuulinga taamada gi lote Pacific.

1.2. De lua ngalue mai gi lote Pacific

De lua hagabuulinga ne loomai gide Pacific mai Taiwan ie 4,500 ngadau gu hulo, deenei hogi de masovaa ne daamada ai de hai veelenga laisi. De hegau nei ni dangada soa donu e hai hegau ai gi maua ai gi sula danuaa loode hegau. Agai gilaadeu ne hulo hogi gi Philippines, Malaysia, ama Indonesia, ga tae adu hogi gi Madagascar, gai bolo gu tae adu hogi gi Malanesia idaha de 3,300 ngadau imuli

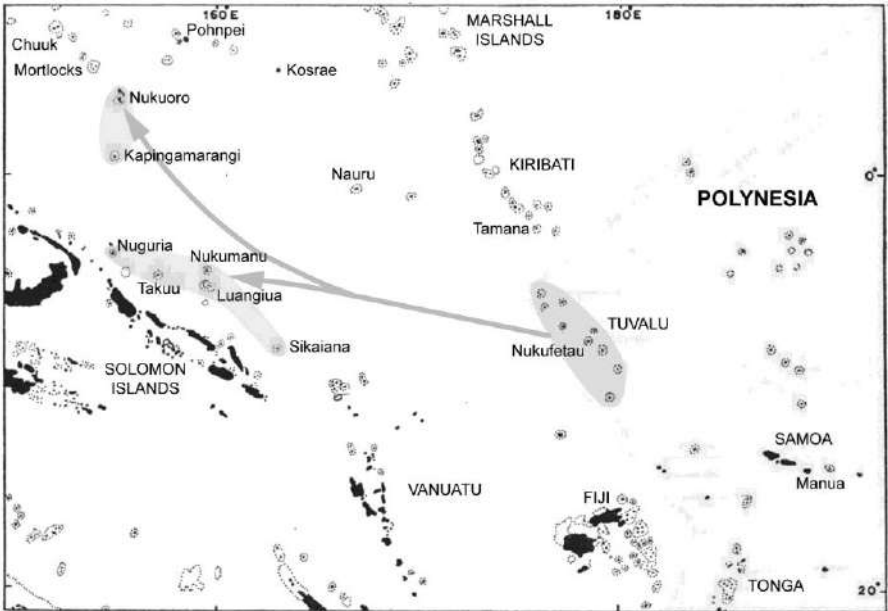
mau. Gilaadeu e pasa saele idenga *Austronesian languages*, gai anailaanei nei gai baasanga o muna nei gu dele magu tae gi Southeast Asia aama denga henua ode Pacific. Gilaadeu ni dangada e balia made iloo ide dele saele laa de moana. Gilaadeu ne tae imua ga noho saele ide baasi gee o Solomon Islands. Go gilaadeu hogi e nnoho saele i denga modu o Vanuatu, New Caledonia, Fiji, Tonga, aama Samoa, gai de mouli ma dahulinga hoou e hagabinga ange bolo *Lapita culture*, ga dae mai ai gi daha de 2,500 ngadau gu hulo. Gilaadeu ne doo denga manu e maua laa ide gai olaadeu aga, ma manu somo e gai laa olaadeu hua, bei dengaa bulaga, iaama, gahudi, nui, gulu, ama de hagadala made haangai dengaa manu dolodolo bei biigi, gaaduu, ma denga gaagoo. Made hagabuni ange hogi de haangoda made ogo baasua, gima ma bule e gai laa. E hanu olaadeu hagadaangangaa golea hai hegau hoou be hai i hadu golaa ma duugima e hai ai mee daadaa ma golea hao mee ma golea ange laa. Gilaadeu e hai hagabuulinga ma e noho saele ai ide hiihii o mommee e baange laa gi tagudai, gai e maua gi kiangi i dagi lau huaabodu i dahi hagabuulinga dangada. Tangada e sala made hagadonu de mouli ome e ilalo de gelegele (*archaeology*) ma de gau e hagadonu de mouli odenga baasanga (*linguistics*) ne tala hagamolomolo bolo degau nei gu hanu don alaadeu hagatau ange gi denga duulanga olaadeu dagi ama delaadeu hai e mouli ai. Muli mai gai gilaadeu guse ulumai taemai hogi gi Micronesia, ma baasi dua o Polynesia ma gilaadeu e nnoho laa donuhuu i Malanesia, ne haibodu ange gide hagabuulinga talamada ga hilo. Denei ai, degau o Lipata go denga dubuna o degau lo dengaa modu ode Pacific i Polynesia, Micronesia, aama hanu mommee paange gi tagu dai o Melanesia.

I dua delaadeu tae mai gi West Polynesia (Tonga ma Samoa) daha de 2,800 ngadau gu hulo, denga maadua madagidagi o degau Polynesia ne nnoho idenga modu nei ie 1,500 ngadau. Lote masovaa nei, gai denga dahulinga, muna, ma haingaamèe o Polynesia gu daamada ide haihegau. Ie 1,300 ngadau gu hulo aagai degau Polynesia gu daamada ide ngaalue gi Eastern Polynesia ga nnoho saele made haimee ai i kilaa.



De loomai ode lua hagabuilinga gi lote Pacific.

De *linguistics* ne hagamolomolo mai bolo denga dubuna o degau Nukuoro ma Kapingamarangi ama gilaadeu i dengaa modu o Polynesia i Melanesia (Nuguria, Nukumanu, Takuu, Luangiua ma Sikaiana), e hagaingoo ange laa bolo, “*Polynesian outliers*,” ne haghale mai ide gau Tuvalu. Denga *linguistics* bolo dengaa muna o denga modu laa daha o Polynesia e tai bei ange maalie gi muna ade gau o Tuvalu. Ange naa huu gi dagodo denga dahulinga ma haingaa mee o Nukuoro, bolo deia ne gidee de modu nei taamada go Vave, ne humai i Manua, se modu nio Samoa, ia ne ngalue gi Tamana, iai nei go Kiribati, agai agumade se modu nio Polynesia ide masovaa laa, abe go Nukufetau i Tuvalu. De masavaa nei gai gu molomolo mai bolo degau Nukuoro ni dangada mai Samoa Ne haghale mai Tuvalu. Gilaadeu e sailoago saele i denga modu o Tuvalu (Funafuti, Vaitupu, Nukufetau, Nukulaelae, Nanumea, aama Nanumanga), aama denga modu o Polynesia i Melanesia (Nuguria ma Luangiua) imua delaadeu tau i Nukuoro. De *archaeology* abego tangada e salaa made hagonu de mouli omee ilote gelegele bolo de gau Nukuoro ne noho i Nukuoro ie 1,200 ngadau gu hulo.



E maua hogi go haiava nei ne loomai ai degau sailoago gi Nukuoro.

Nukuoro se momme de gau sailago saele e tauage ga hagamabu ai mai tagodo ono daalanga mai mua. Gai denga haingaa mee o Tahulinga ma de *archaeology* gu tala hagamolomolo bolo degau Nukuoro e baange gi haingaa mee, ma mouli o denga modu o Micronesia, ma modu o Polynesia i Melanesia. Nukuoro guse mommee suugui ai magovaa Micronesia ma New Guinea, i hiidinga e dagodo i deungaalodo ode haiava e dele ai dengaa vaga i Carolinian i olaau magovaa.

2. DE HAI E NNOHO HAGABUNI MADE MOULI AI

2.1. Hagasaalunga

De huua dangada e vaevae ange gi e valu diibanga hagasaalunga: Seheke, Seala, Sekave, Sehenga Seotolo, Sehili, Setu, aama Setoloa. Degau o dahi ma dahi hagasaalunga nei e maua ide haibodu iolaadeu magovaa. Denga gauligi alodahi gulava ide gaavange gi gilaadeu be dehee de hagasaalunga o dahi ma dahi e dau ai i dono masovaa ne haanau ai. Noo luu maadua se hagasaalunga dau dahi donu huu gai alaaui dama deela hogi delaadeu hagasaalunga. Agai noo luu maadua ni hagasaalunga geegee olaau, gai alaaui dama e vaevae ange gi luu hagasaalunga o tamana ma tinana. De ganimua e kave de hagasaalunga o tamana, de lua dama e kave de hagasaalunga o tinana, tolu dama e kava de hagasaalunga o tamana, ga duudagi adu ai donuhuu i alaaui dama alodahi. Dahi ma dahi i diibanga hagasaalunga nei e dahi ono aligi, hale daumaha, tangada haimee dabu (tangada takotonga).

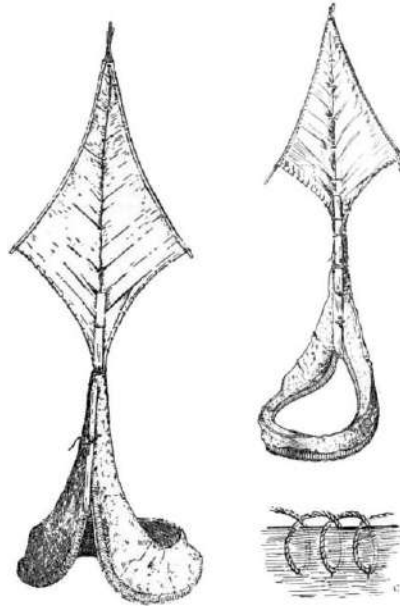
Agai denga hagasaalunga alodahi e hagaseese ilalo de Aligi Hodoologi (e hagaingoo iai nei go tagi, hodoologi, abe king i muna abasasa) Takotonga abe Aligi Sili hogi (go goia hugadoo emao lunga made hagamogomogo) Aligi Takotonga e hili mai daho denga hagasaalunga e dolu, Seheke, Seala, ma Sekave, agai Aligi Hodoologi e hili mai daho Seheke gai edee hilihili bese huabodu mai hee, agai go dono ngadau e hagamogomogo ide tilo.

2.2. Aligi Takotonga

Aligi Takotonga kona dono bau ange gi hegau o lodo hoobisi made tilo danuaa mouli o dangada. Gai diba hegau nei edee niaana

go hiidinga ia se dangada hai mee dabu i daumaha o lote gohu. Dangada kona delaadeu lodanuaa ide ia made hagadubua ia. E kii ia ide hagadubu danuaa idaho dangada ange ide Aligi Hodoooligi. De baasi o tahulinga bolo de nohoanga o Aligi Takotonga go taina daane madua o Aligi Hodoooligi e vange gi aagina. Gai bolo muli mai huu gai gu gaavange gi taane hugadoo madua i magovaa o denga hagasaaalunga e dolu laa.

Aligi Takotonga gode biho o degau haimee dabu alodahi. Vave gode Aligi Takotonga taamada hugadoo. Dono hagasaaalunga gu ueage loo magu maolunga bese goodi. Dangada e daumaha ange donu gide ia i Malae ilalo de ingoo go Maulusanga, e hagabinga ange bolo gode buibui mmahi o Nukuoro. Tagi nei, agumade dono ingoo go “sili” bolo, go ia hugadoo e hagamogomogo, agai go diinonga eidu o taumaha mee hhadu, ia edee se tangada hai mee dabu made iloo mee, denei ai ia e hai donu gi hagasuguulu made hagaabo ange gi ana hegau i daho dahi takotonga abodonu.



Denga mee (mee bini ange gide biho) e vange gi biho ode gau hai mee dabu ide masavaa e hai ai hegau dabu aabe vange gi hongaa biho o denga dinongaa eidu.

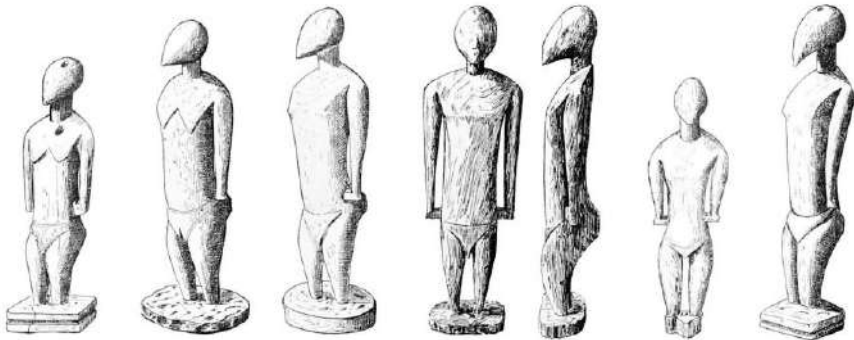
Table 1. Ingoo odenga Aligi Takotonga alodahi (mai mee donu a Jescke 1913 ma Aitel n.d.).

1	Samoulidane (Vave)	2	Deagueligi (Togo lua dama daane a Vave)	3	Dehegavaealigi	4	Daguvave
5	Liunga	6	Veligi	7	Saubigi	8	Mounga
9	Hengagideolo	10	Derohi	11	Naliki	12	Selegi
13	Sabido	14	Alaihomai	15	Deanga	16	Dali
17	Nau	18	Demalo	19	Hagamauadu	20	
21	Saladahi	22	Bomadua	23	Madahi	24	Lauovei
25	Gagahigo	26	Saie	27	Belu	28	Seinugu
29	Mogounga	30	Geidemoua	31	Baeo	32	Dibadahi
33	Daodeala	34	Liunga	35	Magoi	36	Siliagena
37	Silibani	38	Maudagunga	39		40	Alanui
41	Manenea	42	Aladonu	43	Hauhaga	44	Muhege
45	Saubigi	46	Deahu	47	Laodo	48	Demanea
49		50		51	Mahola	52	Gaudagodo
53	Likina	54	Demalo	55	Delohi	56	Bagila
57	Alaui	58	Nau	59	Demoso	60	Dagahi
61	Dagua	62	Lengienga	63	Langadai	64	Dalo
65	Suinui	66	Deanga	67	Bomadua	68	Losolo
69	Duhili	70	Heimalui	71	Magoi	72	Sema
73	Guana	74	Dohogovae	75	Demalo	76	Lamagae
77		78	Deili	79	Dagahi	80	Madalua
81	Nugulalo	82	Doinadi	83	Haimauli	84	Maisi
85	Bilae	86	Delohanga	87	Gaedemoua	88	Dabuaga
89	Hegemadu	90	Lauganala	91	Deadu	92	Maudagunga
93	Duluaki	94	Bagila	95	Alaui	96	Mulio
97	Baeo	98	Haleginga	99	Losele	100	Mangalo
101	Dibadahi	102	Mounga	103	Dalo	104	Suia
105	Noilodo	106	Selegi	107	Gami	108	Sukidaubolo
109	Lauodo	110	Langibaba				

I dua naa huu de magau o dahi dangada ode henua, agai de ingoo o tangada nei gu te alaangi ide dagudagu, de Aligi Hodooligi e dau dali hogi ide hainga nei. Denei ai go denga Aligi Hodooligi

hagaodi ne maua gi iloo. De Aligi Takotonga, made degau hai mee dabu hagaodi alodahi aama degau maatua soa ne iloo denga ingoo 110 olaadeu Aligi Takotonga i delaadeu hagatau denga ingoo mai de tala hagapodo. Aanei denga ingoo alodahi o denga Aligi Takotonga (Table 1).

Go hiidinga ode loomai degau henua gee soa bei degau haangoda daholaa, degau hagao gaadinga i lodo te ngadau 1800, gai degau Nukuoro gu dee hagamogomogo denga haingaa dahulinga ma daumaha madagidagi ode henua. De Aligi Takotonga hagaodi, go Langibaba ne magau ide ngadau 1898, agai de hagataunga nohoanga nei gu tuu (tee duudagi).



Aanei denga hagadaagangaa eidu o Nukuoro ne daa mai idenga laagau.

2.3. Aligi Hodoologi

Denga Aligi Hodoologi⁴ go gilaadeu dengaa biho (dagi) ode huua dangada ode henua. Gilaadeu nei e hagabinga ange gode aamuli ode Aligi Hodoologi. De Aligi Hodoologi taamada hugadoo go Vave, goia ma dono huabodu ne daamada ina de hagabuulinga dangada go Seheke. De hagataunga ode Aligi Hodoologi mai ilunga ne hagatauiho mai taamada mai ana dama edee hilihili bese daane abe se hahine. Hanu Aligi Hodoologi ni haahine. Dahi hagadagodo o denga Aligi Hodoologi ne daohi lodo beebaa go: Aveliki, Temanae, Sui Taupolo, Deinaho, Deulagi, Ohakapisa, Gauna, Kandeisi aama

⁴ Kubary (1900) ne sisi bolo “Ariki Toholiki.”

Lekka. De nohoanga ne daamadaiho mai tamana ange gi tamadaane go Aveliki, Temanae, Suitaupolo, Deinaho, aama Deuluagi, agai dua huu Deuluagi go dana damaahine go Ohakapisa, agai muli mai gode mogobuna haahine o Ohakapisa go Gauna. Mai i tahulinga go Aligi Hodooligi e dongi ange be go ai e suia ia. Agai dangada e daudali donuhuu ana hilihili. Agai nno e deai ana dama agai dono daina daane abe daina haahine e maua ide sui, abe Aligi Hodooligi e maua ide dongi ange dahi dangada edee se dangada mai lote huabodu, agai ia e hai donu gise Seheke.

De Aligi Hodooligi iai ssauaa hagaodiamai ide mmahi agai ia e dagudagu donuhuu gai alodahi e hagadubu e degalemu nno e hanu dangada e kiange ide lanea alaadeu mee ide ia. De Aligi Hodooligi edee hai donu gise takatona, e deai hogi mee hai ai noo ia e deiloo ide hai e basa ange ai gi denga diinonga eidu, dono duulanga dahi gu gaavange ssauaa ide hai mee lagolago. Dono sauua e maua ide hano laa hongaa abe hano laa lalo de takotonga, bei hanu haingaa mee o taumaha go degau hai mee dabu e haihegau ai, agai ana hegau go denga dahi e hagataulia.

De Aligi Hodooligi iai sauua hugadoo maolunga i lote diibanga e dolu e hagaseese ai denga manuia o Nukuoro. Dahi mee, de Aligi Hodooligi iai ssauaa dabu i hongaa denga mee mouli ode henua. De hegau dabu nei iai ssauaa e hagadonu ai taumaha, agai e haigamaiana donu ange gi mouli o dangada. Dahi hagadagodo, e deai se dangada e maua ide sele dahi gulu e hai ai dahi moni noo edee hagasauaa mai daho de Aligi Hodooligi, agai goia hogi e hagao ina ange abe e sui ange de gulu aana ne dugu ange laa gi sehio. Dengaa honu alodahi e hai donu gi gaavange gi tagi. De lua mee, de Aligi Hodooligi iai sauua hagamogomoho agai go goia donuhuu e hagamodu ina be e dugu gi mouli abe e daa gi magau de gauligi gu haanau mai laa gai dono tinana e hai mee gauligi gai dono angaanga digi daa dono gili, agai dono huabodu edee maua ide bale ange ia, be agumade gu kona mmao ide soa dangada i hongaa de modu nei. Tolu mee go tagi e iloo de masovaa e daamada ai takotonga, go taumaha e hagadubu ai laa de masovaa ode hagihagi.

I dua naa huu luu aligi, gai degau hai mee dabu gu hai de hegau e kona laa ide hagadubulia, de hegau nei e hagaingoo ange

bolo go tangada takotonga. Tangada hai mee dabu nei iai ssauaa e hagamodu ai mee edee gode hainga e hagamodulia mai lote huaabodu e gaavange ai sauua gi dana dama daane, abe dahi mai lo tono huabodu gi noho ilote mommee dabu (lilo) ama de noho ide mommee e hai ai dengaa haingaa daumaha ade huabodu e daudali ai. E dahi dangada hai mee dabu maulunga e hai ana hegau dabu aama de hagamanuia de hale taumaha iolaadeu elunga; bei dahi e hagaingoo ange laa gode matai. Denga hegau a degau hai mee dabu e kona ide laumalie go hiidinga go gilaadeu e hagaago ange ai denga mee alodahi ange gide mouli.

Degau ni dangada laa lalo laa e hagaingoo ange bolo ni dangada humuli; de muna nei e hagadonu ange bolo go, “gilaadeu hugadoo i muli” (“du” bolo ‘duu donuhuu’ agai “muli” bolo ‘ide hagaodi gi muli’).

2.4. Haingaa hai daumaha madagidagi

Degau Nukuoro e lua alaadeu hai e hagadonu ai de hagasaalunga lote angaanga o tangada: dubua gode mouli lote angaanga (mai tubu, ‘gu sula age, somo age, hagahale age’), aama de eidu o dangada, o hagasaalunga o olaadeu gu maakau laa.

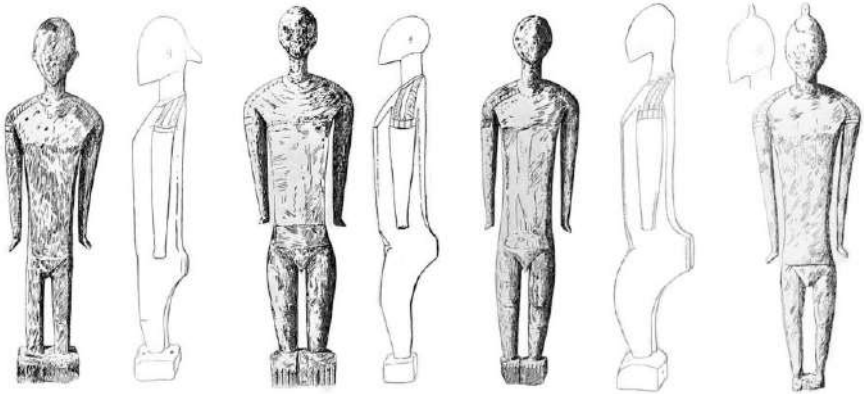
De baasi soa o denga tubua nei e hanu olaadeu hagaingoo, tangada hai mee dabu, de hale taumaha, taumaha edee ni munabodonu, ama diinonga eidu ne daa i laagau, denga bido laagau abe ni hadu abe ni hoolinga manu dolodolo. Alodahi dengaa diinonga eidu hhadu e hagabudubudu ide Malae e sui ai dangada. Agai denga diinonga ni dangada sogoisi, meenei e sui ai gilaadeu ne loomai taamada matali a Vave. De hagadagodo ilalo nei go ingoo taane bese hine, aama alaadeu duhanga hegau ma alaadeu dinongaa eidu, hagasaalunga olaadeu e dau ai, hale taumaha abe mommee iai denga diinonga eidu nei.

Malusanga (bolo gode hagasaalunga o Vave), Aligi du de langi (Tagi ode langi ilunga), Aligi du de nadoagi (Tagi ode henua masa) ama Dole edai (Tagi o lausedi), aanei dengaa diinonga donu o Nukuoro. Denga diinonga ide Malae made hale daumaha i Amalau gode eidu hugadoo e hagamogomogo ange gide huua Nukuoro.

Table 2. Denga eidu o Nukuoro (mai mee donu a Theode-Arora 2013:48, Figure 21).

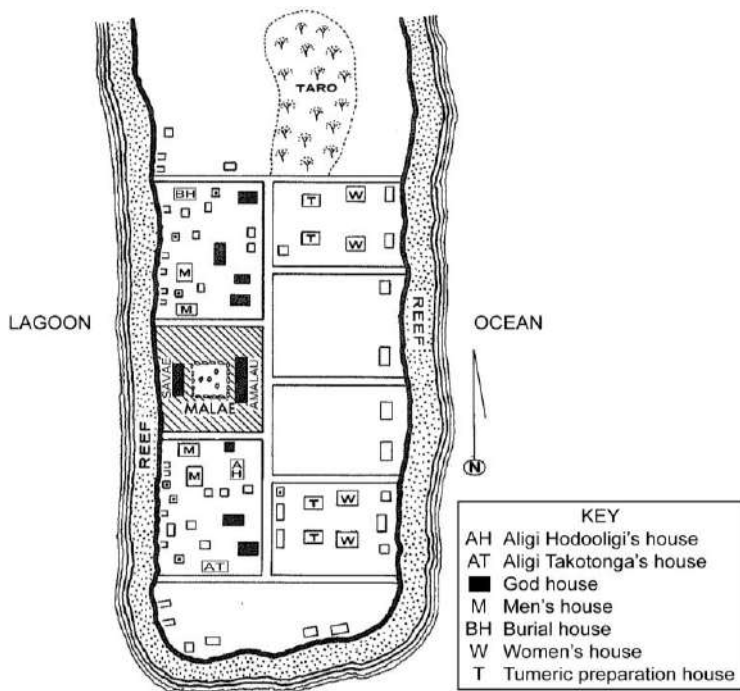
Ingoo o eidu maolunga	Dagodo bese eidu	Hagasaalunga	Hale haumaha bego mommee odenga dinonga	Dinonga
Vave =Maurusanga =De halua aligi (♂)	Eidu dangada	Deidu maolunga ode huaa Nukuoro	Malae ma Savae	Hadu e hagatau ide Malae (e hai ai daumaha o lote gohu)
Vae de uruaki=taina daane o Vave (♂)	Eidu dangada	Seheke	De haka asula	Eidu daailaagau
Dehua i Malae toli=taina daane o Vae de uruaki (♂)	Eidu dangada	Sehenga	De hale vaka	Ngadiubu gu lebu i laini ganoanga Mae hagapigi ange dahi bido laaga ga nnoa ange gide ssanga ode hale
Deheke	Dubua	?	Tahinoa	Eidu daailaangau
Taura	Dubua	?	De raoaki	Gimoo mouli
De haukula (♀)	Dubua	?	Ote aku nuku	Manu llele mouli
De aligi tut e rangi=de eidu matua (Tagi ode Langi i lunga be gode goodi madua= de goodi hagaodia mai de hagamogomogo ma ssauaa) (♂)	Dubua	?	Sapokanga	Eidu daailaagau

Tumua	Dubua	?	Modu o Olomanga	Hadu molomolo iai haonga
Tuhenua	Dubua	?		Hadu molomolo iai haonga
Tutoro	Dubua	?		Hadu molomolo iai haonga
De Aligi tut e natoaki (Hodooligi ode Henua) (♂)	Dubua	?	Amalau	Hadu mai de ahi lalo dehenua
Toro etai=De tupurua (Hodooligi ode Moana) (♂)	Dubua	Seotoro	Mouaki ma De hale tapao	Bido laagau e lua feet de looloa e daudau haledaumaho o Mouaki
Mokopu teheke	Dubua	Seala	Haka ekenoa	?
Manu tapu	Dubua			?
Vae matua=Hili ne ana pea (♀)	Dubua	?	Malae	Dao lloa ne hai mai de nui, e tuu ide Malae
Hili ne ana pea=Vae matua (♀)	Dubua	?	Sapokanga	Eidu daailaagau
Tehitapu (♂)	Dubua	?	Amalau	Eidu daailaagau
Ko Kave (de bodu ode Aligi tut e natoaki) (♀)	Dubua	Sekave	Amalau	Eidu daailaagau
Sope (♂)	Dubua	?	Amalau	E ono dinoga laagau
Kave tele ao	Dubua	?	Sapokanga	Dinonga eidu laagau
Sakomani matua	Dubua	?	Malae	Hadu hagatuu
Sakomani eidu	Dubua	?	Malae ma Kuporu	Hadu hagatuu



Aanei denga hagadaagangaa eidu o Nukuoro ne daa mai denga laagau.

De mommee e hai ai laa denga haingaa mee daumaha e kona ide dabu dono gelegele gode Malae, gu lava ide hagamalaetae gai e tuudege, agai gu buibui i limilimi i denga baasi. E hanu hogi hadu e hagatuu e sui ai denga diinonga, agai diinonga maolunga hugadoo go Maulusanga e tuu hogi i kilaa, agai alodahi dangada e taumaha ange. Luu hale daumaha nnui hugadoo go Amalau ma Savave e duu i luu baasi ode Malae. Alodahi denga hale daane dabu e hagatuu ide baasi ange gide lodo ode henua. Meenei ni hale hogi hai taumaha, denga hale daane nui (hata), mommee hagasuguulu ai hegau o denga daane, mommee e seni ai denga daane tigi haibodu, hale hagadabena ange de danu o tangada gu magau laa (hale matena) aama hanu hale vaaligi e hagamaanadu ai hanu dubuna gu maakau laa (hale tahao). Gai denga hale o denga haahine e hagaduu ide baasi ange gi lausedi, baasi dua ode henua. Menei go hale hai magi o denga haahine (hale tapeo) ama hale a denga haahine e hagadabena ai denga golea e haihegau ai i denga haingaa mee hagamogomogo bei valaai hai leebunga e dao ai denga mee e sui ai leebunga (hale hei lenga).



De hagadagodo o mommee gu noho ai i honga Nukuoro ide 1877.

3. MEE MADAGIDAGI

3.1. Taamada o Nukuoro

E hanu ange daalanga etala gee ai dehai o Nukuoro ne daamada age ai. Dahi daalanga e tala benei, madagidagi, agai e dahi doa dono ingoo go Sogo ne hhao ange hanu gelegele tea gi lotai gede ga gaamai Matangi⁵ ga hai ai Nukuoro.

⁵ Bei de muna Nukuoro nei, “madangi” gode muna abasasa, ‘wind’ i denga muna lagolago ange laa i Polynesia. Mai loo de masovaa sailago madagidagi de muna Polynesia nei ne dae gi Kiribati, ga dae hogi gi Mwoakilloa gaalava ga dae adu hogi gi denga henua idaha o Yap, go kilaa ne sui ai de hagadoonunga ga hai bolo gode henua denga maakau ma olaadeu hagasaalunga. Dahi daalanga Yap ne tala de hai ode modu go Ngulu ne dahi ai, bolo dahi haibodu ne tili gee mai de Matangi, mommee o denga hagasaalunga ne gaamai hanu gelegele tea ga hagaduage ai de modu nei.

E hanu momo muna mai dena muna donu o Nukuoro. Bei dagodo o de hai ne hagadonu ai, dena daalanga hugadoo taamada o Nukuoro, ange gi ono dagodo ma mee e hanu bei dagodo o henua ilalo ma ono diinonga. Taamada gai de langi ilunga e haoli hongade henua soe agai olaau magovaa e daakodo ai hanu vai, gode lausedi. Dena diibanga nei e dagi dahi olaadeu *Dubua*. De langi ilunga go Aligi du de langa (Tagi ode langi ilunga), henua ilalo gode Aligi du de nadoagi (go tagi e noho laa ide baasi lalo nei), agai lausedi go *Dolo edai*. Alodahi dena vaevaenga nei, go de ia ide langi ilunga, go *dubua sili* e gavange mee e hai gide vaenga ange laa, e hagabinga ange laa bolo ni dama. Gilaadeu alodahi nei ne hagabuni ga hagaduuge ai mee hugadoo ilote moana ilunga ma lalo, ga daakodo ai nei mee alodahi e taagodo saele nei.

De *Aligi du de nadoagi* (tagi ode baasi ilalo) e soa ana dama, gilaadeu e holiage ma e ngani ilalo de ingoo *Dubua de giligili*. Go gilaadeu e hagaduuliage dena gelegele tea alodahi i hongade henua.

Dena dama o *Dolo edai* (lausedi) e hagaingoo ange go *Hunga hunga peau*; go gilaadeu e hagaduu age ina de haadinga beau alodahi hongade tai ma agau.

De Aligi maolunga go *Aligi du de langi* e dagudagu ange mee ade *manu alohi langi*, gilaadeu nei e sula mai lote gavagave made langi pala.

Dena diba bale lanea ange laa e hanu olaadeu hagaingoo, agai olaadeu ingoo iai nei edee molomolo, agai e hanu e deai olaadeu angaanga (de dino eidu); Hale dabu ma dangada hai me dabu, e hagaingoo bolo gilaadeu gode buibui made duuli mmahi ode henua go Nukuoro mai imua loo. Dena dama o henua ilaloni bolo go: *Nadeolo, Dilotu, Dahakiolo, Ulamea, Uladodo, Dahete moana, Dikokha* aama gilaadeu ange laa.

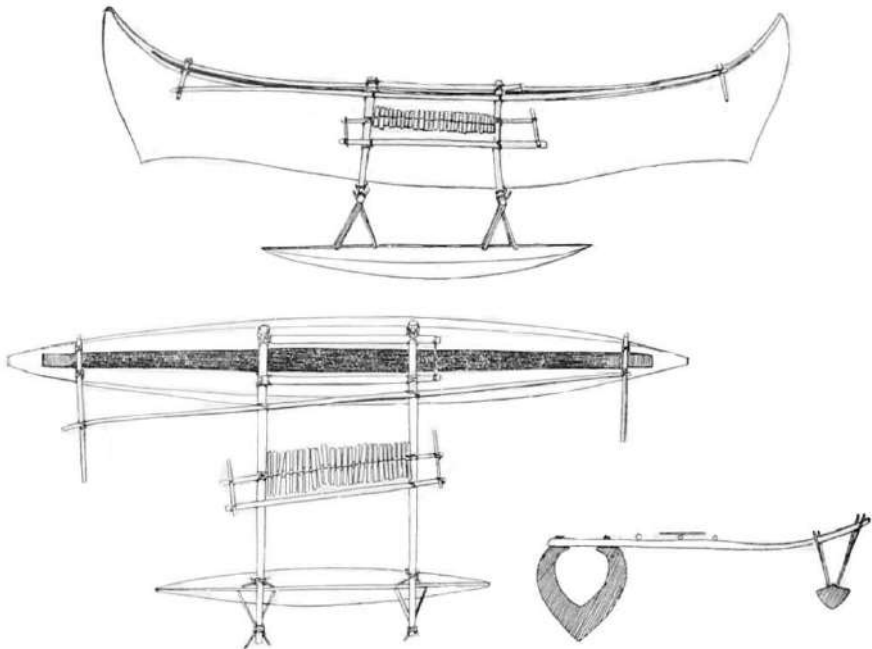
Dena dama ode langi ilunga go: *Dahagi sema, Haloa sema, Osema, Dalau, Mangadiagi*, aama e dogo dolu hugadoo hagamogomogo go: *Dumua, Duhenua*, ma *Dudolo*.

Ange gi daalanga paamai, gilaadeu bolo gilaadeu i magovaa de langi ilunga ma henua ilalo, e hagatale ama de hagammahi de usu age de langi gi maolunga. Taamada gai bolo gilaadeu tee maua, agai ga hagadagaange huu delaadeu maatuage made mmahi gai bolo

gilaadeu gu maua, bolo gu kiange de laumalie de momme magu sula age ai hanu henua made kiange ide laumalie tai (lausedi).

3.2. Dehee de henua taamada

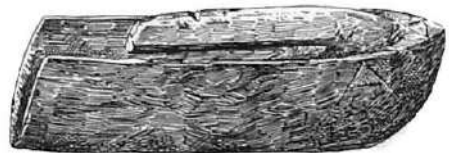
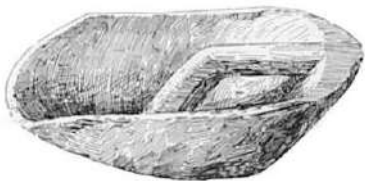
Dahi moni mai Samoa ne gidee de henua go Nukuoro imua. Bolo se dahi sogosogo dangada (daane) e noho a funi. De moni nei ne ahe gi Samoa, ga hagauda e dogo lima daane ga ahe mai gi Nukuoro. Gai gilaadeu ga hebagi ange gi taane sogosogo laa gai ia ga savini ga hano gee. Agai e dogo haa daane mai i hongga de moni nei ne tooage ga nnoho i Nukuoro. Agai de moni nei ga ahe gi Samoa e gaamai ange ai hanu dangada. Deenei ai de masavaa o taelodo dangada ne daamada ai de soa, mai ia Vave aama gilaadeu ne loomai i ono dua. Agai edee go Vave ne noho taamada ide henua. I dua huu de kave a Vave de henua go Nukuoro, gai hanu daane ne ahe gi Samoa ga gaamai angeai hanu dangada houu gi nnoho ai. Olaadeu ingoo te sisi.



De moni.

3.3. De dae mai o Vave gi Nukuoro

Madagidagi loo, agai Mangoauta, hagaingoo ange go Talavadu, goia de aligi o Manua i Samoa. E dahi ono daina go Vave e lodo go goia de hodoologi. A Vave e hanu hogi ono soa; agai ia ga hai baasi ange gi dono daina agai ia ne magulu ide hebagi nei gaia ga hanogee. Dono masalovaa ne ola ai, gai a Vave ne hagabasa ono soa gai gilaadeu ga buni ai bolo gilaadeu ga hulo gee i delaadeu henua donu go Manua e ssala ai dahi henua iai de paba. Agai gilaadeu ga hagapuni e lua vaga de henua ga hai ai de moni laa. De hagaingoo ode vaga nei gode Haolua. A Vave ne kave ma ia e dogo lua ono bodu, Kauboko ama Kaujukiloko; ma ana dama daane, Veideuluagi, Deagu, Veka, ama Tuatea; ana gauligi haahine go Kauna ma Hagalolo; hanu haahine go Leibua (de bodu o Veideuluagi); Kavemuhahene ama Vavedehaliki ama tane go Loko (tamana o Leibua), Mahutamale, Maloa, Tutepala, Kainavag, Longodeau, Mautongaheiti, Utahui, Matalai, Maloa, Sakomanimatua, ama Veimatua. Laa tua denga gai, gilaadeu ne kave matali gilaadeu e haa buu ili hagaingoo ange Pumua, Domsu, Pumuli, aama Dekio. De buu taamada e ili ide masova hai taumaha; tolu buu gu tili (dee gidee), agai de lua made haa e daakodo i ogu daha (i lodo ogu goloa). I hongu luu vaga nei e hagatuu ai dagidahi hale; hagaingoo ange bolo Dehagasulakiloto ma Sikitakina. I dua huu de maallanga gee i Manua, luu vaga buni nei ga dele gide modu go Tamana (Kiribati): De mommee nei alodahi degau ne sailago nei ne hulo gi uuda ga hagammabu ai i delaadeu daalea ide sailogo. Gai denga daane ga hai taudau e tilo ai be go ai hugadoo e mmahi laa. E dahi dogo lua e daudau agai go luu vae donuhuu e hagahaihegau e sua ai tangada ange laa agai luu lima e hagapogo. Agai go Vave ne kii i alodahi denga daane, denei ai gai ia gu sula magu hai ai delaadeu hodoologi.



Taa.

Dua huu delaadeu mmabu agai gilaadeu ga maallanga i Tamana ga hulo gi denga modu nei, gode modu go Luwaniuwa, Niugeria, Niuwatewei Ruania, Fanafuti, Weitupu, Nukufetau, Nukureirei, Nanumea, aama Nanumanga.⁶ Gai ne hanu hiidinga iolaadeu daha ne hidi ai delaadeu te llodo e nnoho i dahi modu nei, gai gilaadeu ga duudagi delaadeu sailogo laa hongaga dee moana gide baasi laa ga dae ai gi delaadeu loomai gi dahi henua tigi nnoho ai, dangada gai gilaadeu gu lodo e nnoho ai.

Gilaadeu ne uluiho laa lote ava gasogaso ga dau ide modu go Gausema. Agai gilaadeu ga oha gi too dagidahi luu vaga laa. Dahi luu moni go Vave ne hano ai agai dana dama daane madua go Veideuluagi i hongaga de vaga ange laa. Luu vaga nei ne tele ga hulo laa lote lodo ga dau ide modu go Motubodai imua gaalava ga tele gide henua laumalie go Nukuoro. A Vave ne dau ide mommee ne hagaingoo ange go Manuka. Agai dana dama ne dau i damaa gi ngaage ange ide mommee go Sahui. Ga tooage huu alodahi gi hongaga de henua gai a Vave ma dana dama daane ga seese e hagahedae ange gilaau (seese hagadau loange); agai go hiidinga Veideuluagi e lodo hagadubu dono damana gai ia ne seese maalie donu huu. Agai de mommee olaau ne hedae ai gai gilaadeu ga vele ga hagamalaelae ga hagaduu ai dahi hale laanui ga hao ai goloa alodahi mai lodo luu alaadeu vaga. De hagaingoo ode hale nei go taboo, agai de mommee laa ne hagaingoo ange go Demalae.⁷ De hale go Sikitakina nogo i hongaga de vaga o Vave ne kave ga hagaduu ide mommee iai nei, e duu ai de hale o Tauhaga (Duulanga nei e goi hagaingoo ange de ingoo go Sikitakina). Agai de hale i hongaga de lua vaga, Dehagasulakiloto ne kave gide mommee e duu ai de hale o chief iai nei. Agai de mommee nei ne hagaingoo ange go Delulu de Henua.

⁶ Luangiua (“Luwaniuwa”) ama Nuguria (“Niugeria”) ni modu i Polynesia i Melanesia agai Fanafuti, Vaitupu (“Weitupu”), Nukufetau, Nukulaelae (“Nukureirei”), Nanumea ama Nanumanga ni modu nio Tuvalu.

⁷ De mommee iai de hale daumaha iai nei.

Agai gilaadeu ga hai de uga ga vaevae ai de henua go Nukuoro ange gi hanu diba vaaligi hagahedae ga vaevae ai olaadeu magovaa.



Maadau.

3.4. Te helongoi magava Vave ma dana ganimua Veideuluagi

Kaujikiloko (de bodu o Vave) ne hadu dahi daahili e tuhi ai a Vave, made hagadubu ai a Loko, damana o Leibua go de bodu o Veideuluagi. Agai a Vave gu lodo baubau mmao; gai ia ga hagahi mai Sakomanimatua ma Veimadua ga hai ange gilaau gi daaina Loko gi magau. Agai Veideuluagi ne gidee luu daane nei seese laa gaogao dono hale gai ia ga sili ange be gilaau ga hulo laa gihee. Agai gilaau ga hai ange bolo iaa Vave gilaau gi hulo gi daaia Loko gi magau. Veideuluagi ne hai ange gi gilaau bolo ia edee maua ide dugua ange de hegau nei gi hai, agai gilaau gi daia ia ma dana damadaane gauligi imua. Denei ai luu daane laa ga ahe gi daho Vave ga tala ange muna a dana dama. Agai a Vave ete lodo e sui dana hagatau, gai ia e lodo donu e daa a Loko gi magau, denei ai gai ia ga hai gilaau gi ahe i dahi haiava gee. Agai Veideuluagi e noho ma e dagitilo lo dahi damaa haonga ide basi o dono hale ga gidee luu daane laa seese ide mommee mmao ide basi gee dono hale. Agai ia ga hagahi gilaau ga

ssili angeange be gilaau ga hulo gi hee, gai gilaau ga tala ange. Agai ia ga hai gilaau gi ahe gi daho Vave ga hai ange bolo ia go Vave gi humai gi daia imua ia ma dana dama daane gauligi gi maakau. Ide masovaa laa gai lodo o Vave gu ahe magu dee taemaha gai ia ga hai ange gi luu daane laa gi duudia de hagatau laa. Agai hanu dangada ne langona muna a Veideuluagi ne hai ange gi Sakomanipatua ama Veimadua ga ssaavini gide bela a Leibua e noho ma e haihegau. Gai gilaau ga tala ange bolo a Vave gu hai bolo e daa dono damana go Loko gi maileele. Leibua ga taamada ide tangisee i dono hinangalosaa ma taemaha.

“Henua o dangada goi koi Leibua...”

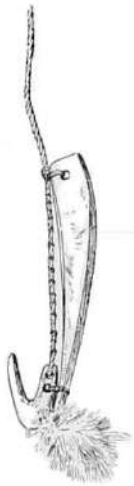
“...hagahinangalosaa, i tadeu hulo gee i Manoa; gi henua o dangada, go mommee e deai ai ogu bale. Au edee maua ide hagaola dogu damana mai ide magau.”



*Hoe a denga
gauligi.*

Agai ia ga dangidangi ange gi dono bodu gilaadeu ga aahe gi Manoa. Denei ai gai Veideuluagi ga hagatodonu ange gide ia bolo gilaadeu e hulo gee i Nukuoro ga ahe gi Manoa. Agai ia ga daamada ide haihegau ange gi dono vaga gi maua ide dele ide moana i mua nei de laafeu maallanga. De masovaa ne paba ai mee alodahi gai ia ga solohio dono moni, ga kave dana dama daane ga hano ai gide hale laanui o dono tamana go Vave. Gaia ga hai ange gi dono damana gi gave dana dama daane ga tilo ange, gai ia ma dono huabodu ga maallanga laa e hulo gee gai gilaau gu dee aahe ange ai naaloo e hegide. Gaia dangi ange gi a Vave gi manadua ia i masovaa alodahi ona e galo ange ai gi dana dama. Agai dono hanohio gi hongga suu gelegele gai dono daina daane go Deagu ga humai ga ssili ange be ono alahenua e hai behee. Agai Veideuluagi ga hai ange bolo de modu go Olomanga e dugu donuhu moo de hodooligi. De modu go Masagumanilalo,

Ahulegalega, Dahangadabu, Tahanga Loloa, Moduidua, Sabinimadogo, ama Deahu e vange gi taane hugadoo e dau made mahi e diloo ange laa made buibui dangada ode henua. De masova laa gai go De-lulu, tama daane a Vavedehaliki, ne haanau i Nukuoro, goia hugadoo e mmahi i hongaga de henua. Denei ai gai Veideuluagi ga malanga ga hano gee i Nukuoro i dono moni, agai go dono bodu, Leibua, ma dono damana go Loko ma ono soa ne hulo matali ia.



Biho hangoda hagatagi.



Maadau mango.

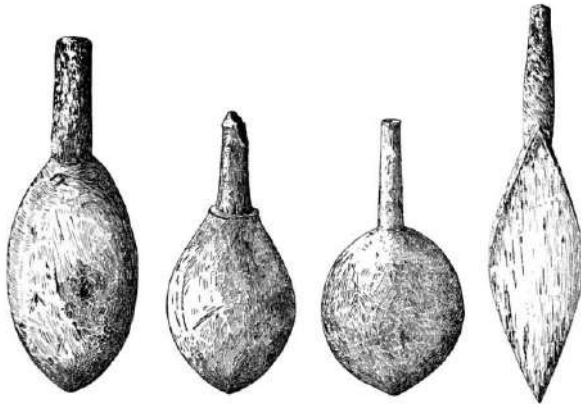
3.5. Gilaadeu degau ne taumai hoou gide henua, ama longo o Veideuluagi

Dahi masovaa gi muli mai, gai dahi vaga ne dau i Nukuoro ma hanu dangada. Tagi i hongaga de vaga nei go Tabuanagi. Gilaadeu ni dangada mai i Matangi,⁸ e sailogo gi Hiti⁹ gai gilaadeu ne dau i Nukuoro. Vave ne hai gilaadeu gi tooage, ga tilo ange gilaadeu ga gaavange mommee olaadeu e nnoho ai. Agai Tabuanagi edee modu ide humai mae heda e ange giaa Vave; idua huu dana haina a Vave i

⁸ Agumade gode modu go Matangi i Fiji abese henua nio denga hagasaalunga mai degau madagidegi.

⁹ I muna Polynesia, Hiti e bei go Fiji, agai Hiti lodo muna madagidagi o Polynesia ni henua edee gidee laa.

dahi masavaa looloo, gai Tabuanagi ga hai ange bolo ia gu gidee e dahi daane i Hiti e bei ange donu ia, agai masovaa alodahi ona e gidee ai luumada o Vave, gai ia e manaduage tane ana gu gidee laa. Agai a Vave ga hai ange bolo alodahi ono dangada e noho ikinei agai e deai ono dangada i Hiti. Agai ga gidee huu a Vave bolo Tabuanagi tee modu ide haina ia made maanadu, gai ia ga hai ange gi taane laa gi dalaa inange muhuu dagodo o taane aana ne gide. Denei ai gai Tabuanagi ga tala ange de hai a dahi moni ne dau i Hiti, agai tagi i hongga de moni laa e bei ange maalie luu mada o Vave. Degau Hiti ne poo taane laa ga noa ia ga tili ange gi lote haonga ode ahi e hanage laa i ulu ode mounga. Demenei gu hagamaanadu ange gi a Vave dagodo dana dama madua gu hano laa agai ia gu kona i dono hinangalosaa ai dana dama gu dee maleva nei.



Tugidugi e tugi ai lauhala ma gili odenga manu.

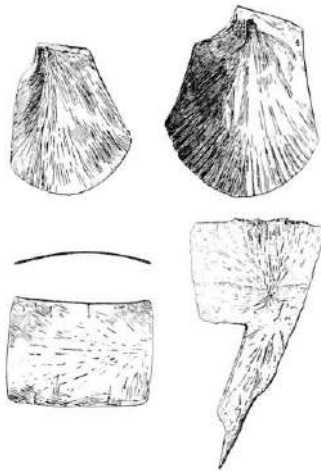
3.6. De sui ange a Vave ama dono hagaodi

I dua huu de laadeu langona taalanga a Tabuanagi ga iloo molomolo bolo tane a degau Hiti ne daa laa ga magau go Veideuluagi, gai a Vave gu hagatau bolo ia ga hano gi Hiti e sui ange ai de baubau ne hai ange gi dana dama. Gilaadeu ne hulo ga hagamabena dahi vaga laumalie gi paba gai a Vave ga malanga. Gilaadeu ne hulo ma tali ia go dana dama daane Deagu, ana damahine go Kauna, ma Hagalolo, Keiulu, Lepa, Dehegevaealiki ama hanu ono soa e soa.

I dua delaadeu maallanga i Nukuoro, (gai e dahi donu huu laangi) gai gu ssula mai luu henua go Oneop ma Lukunor. Gai ga tae mai huu gilaadeu gide henua gai a Vave ga duugilunga i hongga dono moni ga daamada ide anu, gaalava ga hagaodi ai ide aanunga ode hebagi, ga daodaohi age ono goloa hebagi e hagaago ange ai gide gau Oneop i hongga ssuu gelelele bolo ia se humai e hebagi. Demasavaa huu alaadeu e dada mai ai delaadeu vaga laa hongga de agau, gai Deagu gu gidee adu degau Oneop soa mmao e loomai e hebagi, gai a Vave ga hagammane dua delaadeu vaga ga hano gee mai de henua. Gai de laadeu hagamoolau ga maallanga gai gilaadeu tee kave de lango ode moni e lango age ai laa de moni gidee baa de kiili ode moni gi hongga de gelelele. De masova huu degau Oneop ne gidee ai de lango nei gai gilaadeu ga hai huhuamee ange gide lango nei. Agai gu hai gu se labodo ga hano ga hagallau ange gide ama ode moni o Vave. Masova alodahi olaadeu e dai dau henua ai gai de labodo nei ga hagahee gilaadeu gidaha mai de henua. Denei ai gai gilaadeu ga dahedaahae saele ai donuhuu ide moana ga duasala ai ide hiigkai made hieunu. Ga kona huu delaadeu haingadaa ide moana gai Keiuli ga hai de buubuu ga iloo bolo a Vave e hai gi magau agai degau ange laa ga maua gi dau henua aabe go degau ange laa alodahi gi maakau gai a Vave sogosogo ga maua de ahe age gi Nukuoro. Agai a Keiuli e madagu ide tala ange gi a Vave. Agai a Vave ga ssili ange gi dana damahine: Digi ai nei mee ne hagaago ange gi Keiuli tadeu hai e ahe ai gi Nukuoro? Agai a Kauna ne ssili ange gi Keiuli agai ia ga tala ange de muna abodonu agai Kauna ga hano ga tala ange gi dono damana.

I dua de iloo a Vave mee laa gaia ga hagammanuaa dono angaanga ga hulu ai de lolo gai ia ga hano ga noho i hongga de ama ode moni. Agai dengaa hagammanuaa mamu lanea ga loage e gai denga leebunga i dono angaanga, agai gu haingohie de laadeu maua hanu mamu e gaimee ai i hongga de moni. Agai de hagammanuaa hulu maa lima laangi, i boo taiao de gohugohu agai a Vave ne hai ange gi gilaadeu gi diloo de sobo ode laa gai gilaadeu ga tali bese hagammanuaa aha e hai. Dee mule gai gilaadeu gu gidee adu de gohunga agai gilaadeu gu gidee adu hogi e dolu daholaa e loomai gi gilaadeu. De masova ne baamai ai dahi daholaa laa gide moni, agai a Vave gu

lodo e lele gi lausedi gai lua ana damahine ne buibui ia gi daalia, gilaau e lodo e hua ange dahi daahili gide ia. Gilaau ne huaange dahi daahili e tuhi ai ia, “Hausoko Vave kidomo henua...” Dahili nei ne hagamaanadu age hogi hanu hagadaumee nogo hai imua i hongga delaadeu henua go Nukuoro. Vave gu ngalue ono lodo gai ia ga dangi. Galava gaia ga hagasege iho gi lausedi agai dahi daholaa ga holo ia. Imua dono liloiho gi lalo tai gai ia gaa oo ange gi gilaadeu ga hai ange gilaadeu gi dagi diloo de heduu go Lauveke mage hagasoe ange olaadeu moni ga dae ai gi Nukuoro. Agai gilaadeu ne dau i Nukuoro ide modu go Gausema. Dahi beau ne maga age de laadeu moni gi hongga de agau. Go kinei alaadeu ne gidee ai de labodo laumalie gai gilaadeu ga iloo ai bolo degau Oneop gu helau gilaadeu. Muli huu meenei, gai togo lua dama daane madua a Vave go goia gu hai togo lua Aligi Takotonga (Deagueligi ide Table 1).

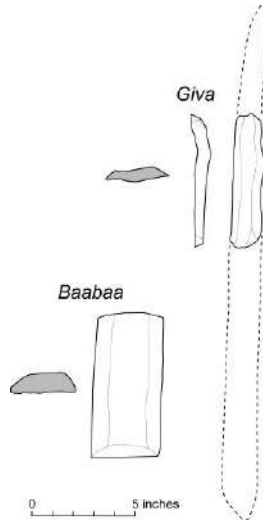


Denga me isi dilo ma lauhala ne hai mai idenga duu baa (aanei lunga) ma baba honu (aanei i lalo).

3.7. De moni ne humai i Hiti (1)

Dahi masova huu gai dahi moni laanui ne dau mai gi Nukuoro. Agai e lua ama i luu baasi ngaadahi ode moni nei. Degau i hongga de moni nei e maadagu ide toage, agai gilaadeu ne nnoho donuhuu ide mommee mmao ide agau. Agai dahi moni ode henua

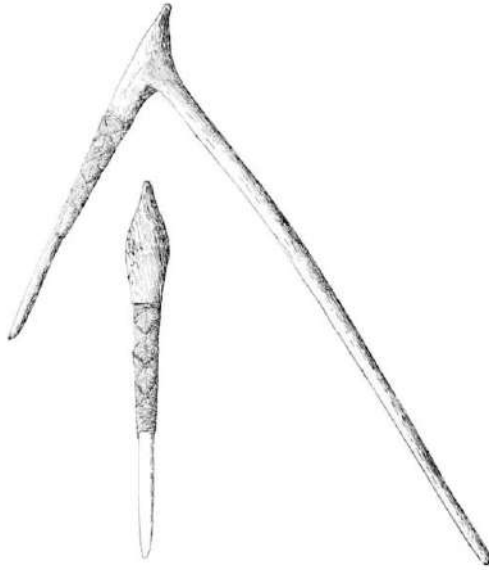
Nukuoro ne sao laa de ava ga dele hagasoe ange gide vaga henua gee laa, agai hanu daane de henua ga dada dahi moni laa hongga de agau ga hano laa de baasi gee ode degau i hongga de vaga henua gee laa gidee gideeai gilaadeu. Degau i hongga de vaga henua gee laa e daumada donuhu de moni imua laa, gai gilaadeu e maanadu bolo denga daane i hongga de moni taamada laa se humai e hebagi ange gi gilaadeu. De masovaa alaadeu e tilo ai de moni i mua laa agai dahi taane henua gee laa ga gage ange gi hongga de moni de henua laa ma dono goloa hebagi. Agai de masovaa laa donuhuu gai de moni angeange laa guse dae mai ide baasi gee ode moni henua gee laa, gai dahi daane dono ingoo go wei ga lele ange gi hongga de moni de



*Goloa hebagi o degau henua gee: “Baabaa” aama “Giva.”*¹⁰

¹⁰ Degau henua gee mai Hiti ne gaamai matali gilaadeu i hongga olaadeu vaga hanu hagadaagangaa goloa. Goloa bei naivi ne hai mai i hadu malamalama beni galaasa e loage laa lote ahi ilalo de henua. Dahi dibaa mee ode hagadaagangaa naivi nei, hagingoo ange gode “Giva” nogo i daho de hoolooli go Lekka ide ngadau 1910. Degau esaalaa sale laa goloa madagidagi (*archaeology*) bolo meenei agumade ne loomai ide modu go Admiralty Islands i gaogao New Guinea. Dee mee ange laa se hagadaagangaa goloa hogi ne hai mai i duugima, bolo se “Baabaa.”

henua ne dae mai laa imua laa ga poo de goloa hebagi o taane henua gee laa ga kave. Denga daane Nukuoro laa ne vaivai daa degau henua gee laa gai te kave olaadeu mouli. Degau henua gee laa e hagaingoo bolo go Kiepu, Lasila, ... agai bolo nimee ne loomai i Hiti.

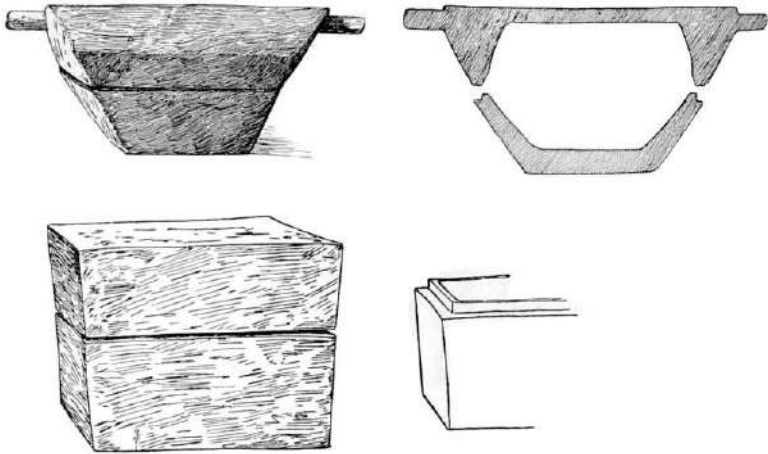


Se goloa labagau ange donuhuu gi hegau.

3.8. De moni ne humai i Hiti (2)

Hanu masova gi muli mai gai hanu dangada mai Hiti ne uluiho ide ava ga dau i Nukuoro, ide mommee go Savai. Degau Hiti nei ne loage ga noho i hongga de olo i suu gelegele ga gidee huu degau Nukuoro dega nniu henua gee soa nei, gai gilaadeu ga hagabuni ga hai hagasaele ange be dehe delaadeu hai e hai ai degau henua gee nei gi hulo gee. E dahi hahine e noho i gaogao de mommee olaadeu e nnoho ai nei ma e hai ai alaadeu hagasaele, dono ingoo go Vavedehaliki. De hine nei ne oo ange gi denga daane laa ga hai ange gilaadeu gi haia dana dama dane go Delulu gi hano gi hebagi ange gi degau henua gee laa, bolo go hiidinga goia e mahi gai e maua ia ide hai degau henua gee laa gi hulo. Denei gai gilaadeu ga hagahi Delulu. Agai dono masova huu ne humai ai ga gidee adu de soa o denga hagadaumee laa, agai ia ga ahe gi dono hale e gahu ai ia

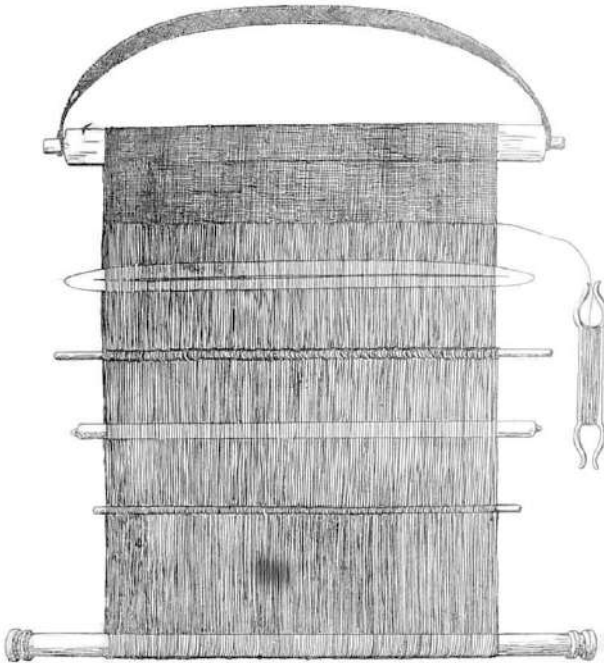
ono malo hebagi. Ga gidee huu degau Nukuoro nei bolo ia gu ahe dua, gai gilaadeu ga hevaalogi ga hagadaba bolo ia gu madagu! Agai te mule donu ia gu sao mai made paba danuaa ga hagasoe adu giolaadeu hagadaume. Agai de masova huu ona ne dae adu ai gai ia ga poo mai dahi daane, ga poo luono vae ga hhanganga lua taane laa ga maga dahi luu baasi o taane laa gi ngaiho ga doiho gide mommee go Delauaki, agai de baasi ange laa ne maga gi ngaage ga dohio ide mommee go Haletapau. Ga gidee huu gilaadeu meenei gai denga daane Nukuoro ga hebagi ange gi denga hagadaume nei ga daa ga maakau. Edai baange donu gise e dolulau dangada alaadeu ne daa ga maakau. Gilaadeu ne oha olaadeu moni henua gee laa gai gilaadeu ga kave denga haahine o Hiti nei ga duha ai ioladeu magovaa. Agai gilaadeu ne lala degau maakau laa ilotai geelinga alaadeu ne keli, ide mommee go Savai. De masova huu denga hadu ode umu ne kona ai ide vela gai gilaadeu ga hagadaakodo olaadeu angaanga gi hongga umu ga haoli i gelegele tea ma laumanu. Masovaa gu dai paba ai mee alodahi gai degau Nukuoro alodahi ga odi mai e daa de gai. Agai ga hhuge huu de umu gai gilaadeu gu gidee bolo denga angaanga laa e panga gai e saaua, gaalava gai gilaadeu ga kave olaadeu angaanga ga tili iite lodo.



Ngavesi haangoda se ngavesi doange ai goloa o taane haangoda – bei madau, biho, baibu ma maasese.

3.9. Denga moni ne loomai i Kiribati

Madagidagi, ide masovaa ode Aligi Takotonga go Demalo (gode nambaa 54 ide hagatau), e matolu moni iai 300 dangada ne loomai i Kiribati, agai gilaadeu ne dau ide baasi dai o Nukuoro. Gai de masovaa laa agumade se 300 dangada e noho i Nukuoro, ga huu gilaadeu de gau soa i hongaga denga moni nei gai gilaadeu gu maatagu. Gai gilaadeu ga gaamai hanu bulaga ma huaamee ga gavange gi degau henua gee nei ga dangidangi ange gilaadeu gi hagassoe gi hulo, gilaadeu gu manovasaa kana dee dohu denga gai i hongaga de henua nno degau henua gee nei gu lodo e nnoho ide henua. E dahi daane i magovaa degau Kiribati nei dono ingo go De-ibilie. Ia gu humai dahi masovaa imua gi Nukuoro i hongaga dahi vaga laanui, dono giabini go Samon, gai taane laa ne ahe. Agai ia ne hedaee ange nei de hagabuulinga vaga Kiribati nei, agai ia ga ahe mai hogi ma tali gilaadeu. Degau Kiribati nei ne duudagi delaadeu sailogo gi daingahio.



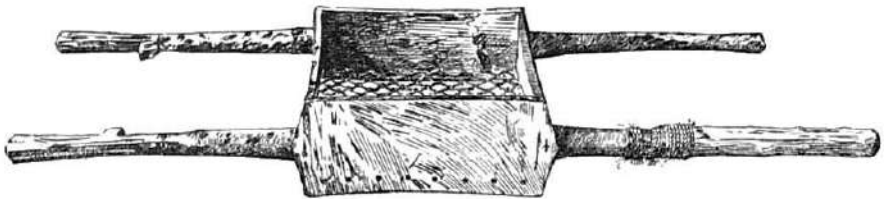
Mee hai ai mee llanga Malo denga daane.

3.10. *De vaga mai Kiribati*

Dahi vaga laanui ne dau ide modu go Gausema. Se dinongaulu dangada i hongu de vaga nei. Denga Daane: Lasenau, Leibilak, ... Denga haahine: Seguolo, ...

Gilaadeu nimee mai Kiribati agai ne loomai ga noho i Nukuoro. Lasenau ne agoago ange degau Nukuoro de hai e hai ai de maadau haangoda laanui mai ide manu somo makaga, bei de hagadagangaa maadau a onodangada e hai ma e haangoda mango ai.

De aligi o Nukuoro ne hano dahi masovaa ga hangoda i hongu de agau i baasi dai de henua, gai dahi daane Kiribati me hano ma tali la. Ga ahe mai huu gilaau gai gilaau gu gidee dahi bae gelegele hooi i hongu de agau, agai de aligi ga hagadaba, “De baegelegele nei niogu!” Agai taane Kiribati laa ga hai ange, “Deai, niogu!” Agai de aligi ga hai ange: Gidaau ga dugu ange gi denga goodi gi hagaago ina mai. Au e hai sigidaumaha ange gide goodi go Vave ga hai ange ia gi haia de manu somo lau sedi gi somo age ikinei. Gaia ga hai ange gi Tapualiki (taane Kiribati), “Haia dau sigidaumaha ange gi doo goodi ga dalodalo ange gi haia dahi hagadaganga manu gi somo age ikilaa, gu somo naa huu gai niou, gai noo tee somo gai gu niogu ai loo.” Gai hanu masovaa huu gi muli mai gilaau ga loomai laa gaogao de baegelegele laa, agai gilaau gu gidee adu de manu somo gode bua gu somo age i kilaa, bei dalodalo o taane Kiribati. Agai tane Kiribati laa ga hagabudu mai hanu hadu nnui ga bae de bae laa luu baasi ode baegelegele laa gidee daangia ai denga gelegele laa i tai. Agai ia ga doo hanu nui ama hanu manu somo ange laa gai ia ga gaavange de ingoo ode modu hooi laa go Deahua. De bua ne somo laa taamada ide modu nei ga hagamolomolo ai be nio ai de modu nei gulava ide sele tangada niona de modu nei ide ngadau 1906.



Tangadanga se goloa hai gai e nonu ai denga mee solo mai de aga ode bie.

3.11. De vaga mai Marshall

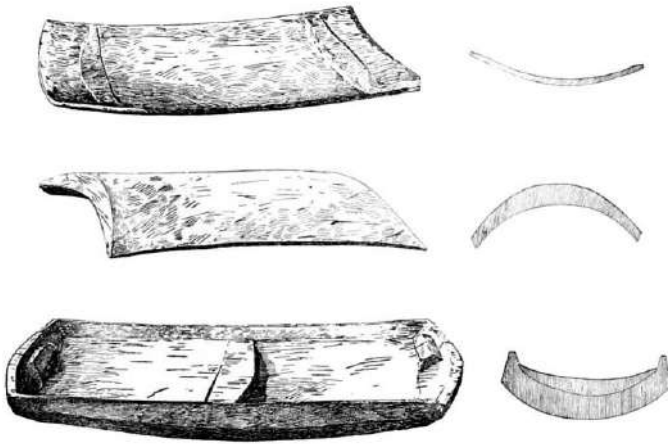
De masovaa ode Aligi Takotonga ... agai e dahi vaga laumalie ne dau i Gausema. Ne humai i dengaa modu o Marshall. Honga de moni nei go denga daane: Lepe, ... ama denga haahine: Salonga ...



Hanu mee llanga be ni goloa llanga mee se (1: lavalava haahine ne hai mai gili goehau, 2: malo taogubu o taane ne hai mai goloa hai maio mai gili gahudi, 3: de beele ode goloa hai malo, 4: mee hhao vai, 5: de ubu diadia ne hai mai lihohiho duugaha).

3.12. *De vaga mai Onotoa*

De masovaa ode Aligi Takotonga go Langadai (gode nambaa 63 ide hagatau) agai dahi vaga laanui ne kasa age gi hongaa de agau i gaogao de modu go Gausema, agai dahi gauligi daane i hongaa de moni nei ne maileele. Gilaadeu ange laa gu deai olaadeu mahi, agai degau de henua ga gaamai gilaadeu gi hongaa de henua. De moni nei ne humai i Onotoa i Kiribati. Denga daane go Deupi, Puateia, Dukapu, Demumulei, Tamaki, ama Kapupuki. Denga haahine go Dekaputi, Baliki, Nejatapu, Debupuna, Meilua, Bakau, Tehamonga, Atounaliki, Neteala, Dilingeni. Ide laadeu sailogo mai gai e dogo lua daane, Deniou ma Palailaki ne maakau i hiidinga gu deai olaau mahi made baageaa. Gilaadeu ne nnoa ange luu daane maakau nei gide ama ode moni e hagalulu ai denga mangoo, agai gilaadeu ga daa denga mangoo nei ga gaimee ai hongaa de moni. Gilaadeu ga dau laa i Nukuoro, gai luu angaanga laa e dagodo huu, gai gilaadeu ga tili gide lodo.



De baba se baabaa a deng haahine e llanga ai hagahala.

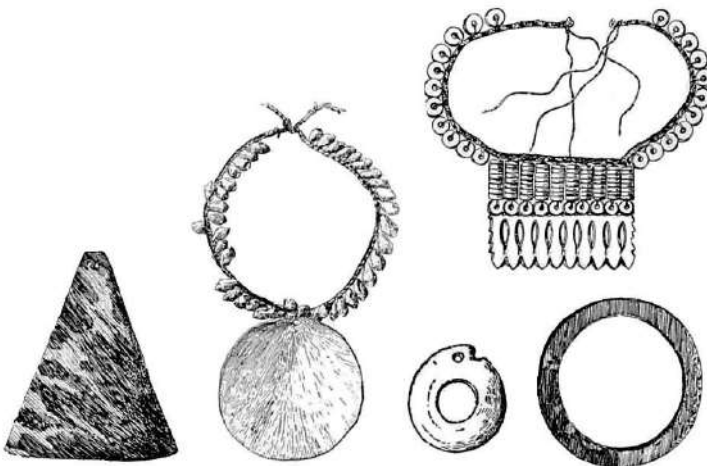
3.13. *Dahi hai e tala ai*

Aligi Takotonga go Langatai ne hano ga haangoda matali hanu dangada ne daahea mai Onotoa i denga modu a Kiribati, gilaadeu ne haangoda i baasi idai de henua i hongaa de agau. I delaadeu ahe mai gai gilaadeu gu loomai laa gaogao dahi baegelegele

hoo, agai Langatai ga hai ange gi dahi daane mai Kiribati, “Diloo de baegelegele laa, niogu! Gai taane o Kiribati laa ga hai ange deai, niogu! Agai tagi ga haiange, ga danua naa huu, gai au ga hai nei dagu sigidaumaha ange gi dogu diinonga go Vave ga hai ange ia gi hagasomo ina age dahi manu somo se nau (se manu e somo i lausedi), agai koe ga hai hogi dau sigidaumaha ange gi doo diinonga go Tapualiki (se diinonga mai Kiribati a taane nei ne gaamai matalia) gai koe ga hai ange ia gi hagasomo ina age dahi manu somo oou e lodo ai i kilaa. Nno go dau manu ne somo age imua, de baegelegele naa gu niou ai loo, agai no go dagu manu ne somo imua gai gu niogu ai loo.” I muli mai huu i delaaui ahe mai gide mommee laa gai gilaau gu gidee bolo se bua gu somo age i kilaa, gode manu somo o taane Kiribati laa. De bua laa ne te maleva ide masovaa tangada niona de modu laa ide ngadau 1906.

De modu laa ne hagaingoo ange go Deahua; Edee se diba matali de kai, muli mai hanu hadu gu hagabudu mai e hagalaanui ai demodu nei.

Alodahi denga baegelegele nio de hodoologi. De modu go Deungagelegele hogi ne haga laanui ide gaamai hadu ga bae ai. Denga ingoo modu ne hagatau i daalanga madagidagi taamada i Modulalo, abe Mokelikeliitaha hugadoo mua gi baasi dai ngaage ga hano ai gi dua ...



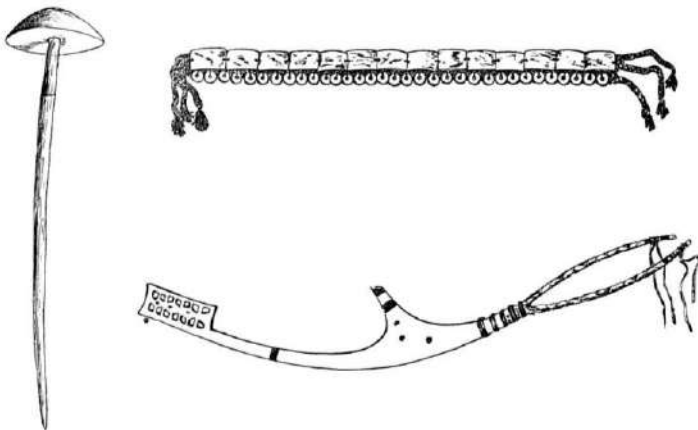
Mee hagalaagii o tangada.

3.14. *De moni mai Yap*

De masovaa ode Aligi Takotonga go Heimauli (gode nambaa 83 ide hagatau) agai dahi moni mai i Yap ne dau i Nukuoro mai ide henua go Morotei i Indonesia agai de moni nei ne maga age gi hongga de agau gaogao de modu go Namailotoa. Hanu dangada o Nukuoro ne hulo ga gaamai gilaadeu ga tilo ange go hiidinga gilaadeu gu baageaa gu deai olaadeu mahi. Ne dogo hidu daane i hongga de moni nei, olaadeu ingoo go Valatolo, Valani, Tamana, Kolopu, Kemieo, ... Gilaadeu hugadoo gu nnoho i Nukuoro. Gai dahi masovaa gi mululi mai e dahi angeange moni ne dau i Nukuoro mai i Yap. De moni nei ne humai e ssala de moni imua laa. Hongga de moni se dino ngaulu nei e dahi daina o Kimieo iolaadeu magovaa. De moni nei ilalo de hagaseese o Kilitamana; agai ingoo denga daane ange laa go Viniginamu, Kilitamana, Kauvavasa, Tale, Valatolo, Jalona ma Vatamati. Gilaadeu ne noho i hanu ngadau i Nukuoro gu hanu alaadeu dama. Gai ga dae huu gide laadeu paba e aahe gi Yap; gai alaadeu dama ne nnoho donu huu i Nukuoro.

3.15. *De moni mai Sonsorol*

De masovaa o ... de Aligi Takotonga, gai e dahi moni mai Sonsorol (Western Caroline Islands) ne humai gi Nukuoro. Se dahi sogosogo daane i hongga de moni nei, dono ingoo go Kinimale; ia ne noho i Nukuoro ga hagadili ai hanu dama soa.



Denga mee hagalaagii ode biho.

3.16. *De vaga laumalie*

De masovaa huu go Lauganala (gode nambaa 90 ide hagatau) ne hai tangada hai mee dabu, agai e dahi vaga laumalie e dolu ono saiolo e hagadaheahea saele laa gaogao o Nukuoro ie lua laangi. De laangi taamada gai hanu dangada de henua ne hulo ga haguesuiage hanu hua manu gai i hanu goloa abasasa. De laangi mai ange laa, agai tangada hai mee dabu ne hagalagii ia gai gilaadeu ga hulo gide vaga laumalie laa, agai ia ne oo saonoa ga hua daahili. Gai ga paamai huu gilaadeu gide vaga henua gee laa gai degau de vaga laa ne tili gilaadeu ide bagi ga maakau. Delauhala ma dogo lima ange daane. (Degau i hongaga de vaga laumalie ne hai bolo delaadeu hagalagii laa oladeu angaanga ga huadaahili saunoa se llodo e hebagi. Don Juan Baptist Monteverde, *Commander* ode vaga Spein *La Pala* ne gidee Nukuoro ide ngadau 1806. Captain R.L. Hunter ne gidee hogi Nukuoro ide ngadau 1840.)



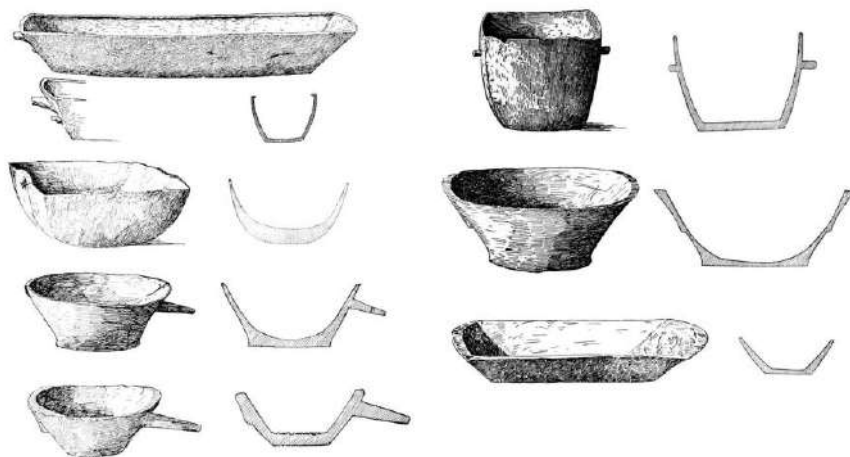
Tolomu.



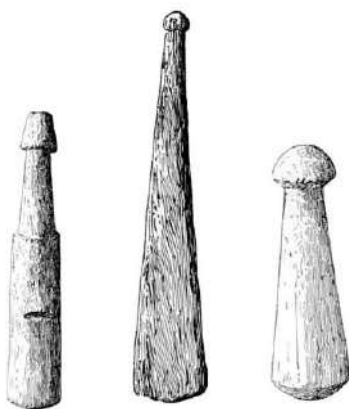
Hoe aanu.

3.17. *De moni mai Namoluk*

De masova o Aligi Takotonga Mangalo (gode nambaa 100 ide hagatau) e dahi moni ne dau i hongaga de olo o Nukuoro. De moni nei ne daheamai ide modu go Namoluk (Mortlock Islands). Denga daane: Mala, Ulia, Kalamangi, Vanam, Atepo, Kausolapa, Colup, Matia, Salumelangi, Kolota, Inau, Nailo, Luluoko, Kalangi, Utomu, Naikapi, Sapaluta, Kama. Gilaadeu ne noho i Nukuoro ie dolu malama galava ga ahe gi delaadeu mommee, gai tee tau ide laadeu henua, gai ne daahea ga tau i New Guinea ga maakau ai.



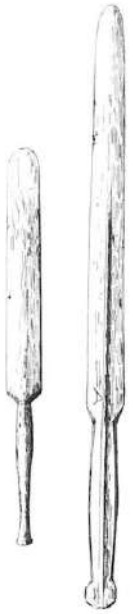
Gumedi ma beleidi ne daa i laagau.



Dugidugi e tugi ai gai ma valaai.

3.18. De vaga mai Marshall ide ngadau 1870

I dua donuhuu de maallanga degau Namoluk ga hulo, dahi moni laanui mai i Marshall ne gasa age i Nukuoro. De moni laa ne malanga mai i Majuro e hano gi Ebon gai tee dau henua. Deng daane i hongga de moni nei go: Lamanelei, Lalelang, Lasekal, Lakamakat, Leijulu, Labatulu, Ladui, Leikolang, Latakkisong, Latakabung, Lankotin, Beliu, Laik, ma Ladaka. Gai denga haahine go: Libalik, Lailik, Liju, Likaniang, Libaleisak ama Laalik (tangada gauligi



*Goo dada
daagoli.*

hugadoo i gilaadeu ne mouli i hongā Nukuoro ide ngadau 1912, agumade gu madahidu ono ngadau).

Gilaadeu e dau ange gide hagabuulinga vāga go Jormelu. Jormelu, gode Aligi o Marshall, agai go taina daane o Aligi Loeak gu maileelee laa imua ide ngadau 1903 go tamana o Loren ne sailogo matali dahi hagabuulinga moni e hulo gi de modu Majuro i Ebon gai te dau henua. I dua delaadeu dahea saele ide moana ie hia laangi, gai gilaadeu gu gidee adu dahi henua gai gilaadeu ga hulo gi agina, agumade go Minto Reef.¹¹

Gilaadeu ne nnoho ie dolu malama ga gaimee i dega manu lele ma mamu. De modu laa e deai dangada iai, agai e lua dimaa e kasa age gi hongā de agau. Denga baalanga seini e nnoa ange laa e dagodo molomolo i hongā de agau agai gu molomolo ange gi gilaadeu bolo degau i hongā luu vāga ne ne kasa laa ne hagatale de tili luu angkee e hagalau ai de vāga gai gu mmule gaalava gu kasa age. Gilaadeu ne nnoho ga hai ange olaadeu moni gi danuaa gai gilaadeu ga duudagi ide laadeu sailogo. De masavaa ne lava ai ga daamada de dele gai

de madangi gum mahi ga oha angeange denga saiolo gai gi laadeu ga dahea saele ai donu huu, ga dae ai delaadeu gidee Nukuoro. Gilaadeu ne lodo e loage gi uda gai demee mmilo ga kave gilaadeu ga leva age idua Olomanga. Degau de henua ga loomai ga kave gilaadeu gide henua. Degau de henua ne abodonu ange gilaadeu agai hanu daane la ga haibodu ange gi hanu haahine o Nukuoro.

I dua de laadeu sailogo saele gai hanu gilaadeu gu tau i Nukuoro, agai Jormelu ma gau ange laa ne hulo ga dau ide modu go Kapingamarangi, agumade 200 miles gide baasi ngaage. I dua huu hanu ngadau lanea, gai de baasi soa o degau Marshall nei ne ahe gi delaadeu henua ide ngadau 1872 i hongā dahi vāga hesui age goloa dono ingo go “*Matautu.*”

¹¹ Minto Reef e dagodo i baasi ngahio o denga modu ode Eastern Caroline Islands.

Dahi hagadoonunga mai daho dahi dangada gee, muli dahi masavaa gai degau Marshall gu dee paba gai gilaadeu ga hagadau madaangudu io laadeu magovaa ga hagataba, “Gidaadeu ni daane, gidaadeu edee ni gauligi ne haaleinaage mai daho odaadeu dinana. Taadeu mommee donu go lalo de laa e kave odaadeo mahi made mouli lotaane. Gidaadeu ga hebagi ange gide gau Nukuoro.” Gai muli huu delaadeu hebagi gai gode gau Marshall ne maa kulu.

3.19. Aligi Hodooligi go Kandeisi

Madagidagi loo gai dahi ahine dono ingoo go Kandeisi, dehine nei ia se hodooligi hogi. Dahi masavaa i muli mai dee hine hodooligi nei ne haanau gai dana dama se daane. Ga hanau huu gai e dahi ono dagodo galava gai gilaadeu ga hagatale de hai ange velaai de henua gai tee maua gi helui dono magi gaalava gu maaleele. Kona mmao dono buliaamoou idana dama, idenga langi i mulimai de danu dana gaagaa gaia goi daemaha ai donu huu made buliaamoou.

Galava gaia ga vange dahi haingaa gi tinongahulu bolo dua de laangi ne magau ai laa dana dama ga hano ai gi muli gai gi daia gi maakau denga gauligi alodahi. De gau Nukuoro alodagi gu dee paba made maatagu. Hiidinga beniaha naa huu ade hodooligi e lodo ai gai e hai gi bei.

Gai go lote masavaa olaadeu e nnoho ai i lalo ssauaa ode gau Saemani gai go gilaadeu ne duudia de hainga nei gidee haihegau. Lote masavaa nei gai de huaa dangada o Nukuoro gu paba made ilaage i muli mai huu gai dahi daane besnese e dahi ono boose dele saiolo gaie dahi daane Nukuoro ehaihegau ange gide ia. Gai taane besnese ga malanga nei e hano gi Kosrae gai taane Nukuoro e haihegau ange laa gide ia ma dono bodu made laau dama ga hulo hogi. Deingo deehine nei go Siagoi. Delaadeu masovaa ne tau ai Kosrae gai taane besnese made bodu o Siagoi ehai alaaui hegau. Gai Siagoi e hano gide suguulu misineli adenga gauligi ahine mae hagallongo made tilo alaadeu mee daumaha e hai. Go kinei oona ne dahuli ai ga hagadonu de goodi ode Baibele. Gilaadeu ne nnoho i Kosrae ie dolu malama galava ga mallanga ga loage gi Pohnpei idahi damaa masavaa imua de loage gi Nukuoro.

Ga tae age donu huu gi Nukuoro gai ana momo mee ne mau itagodo ode longo danuaa gaia ga hagammahi ga ago ange gide gau Nukuoro. Gai edee mmule donu gai dee hine hodooligi go Kandeisi gu dahuli hogi dono moouli.

3.20. Aligi Hodooligi go Lekka

I dua de hodooligi haahine go Kandeisi agai dana dama daane go Lekka ne sui ga hai ai de hodooligi o Nukuoro. Gai mua nei dono hanange ga kave tuulanga ode hodooligi gai e hagamogomogo hogi de talaage hua ode longo danuaa i dono mouli.

Dee hine go Siagoi i dono hagaduungae i ana mee ne ago idono hano gi Kosrae ne hidi ai nei de hano o Lekka ga suguulu i Kosrae. Masavaa alodahi ee dau mai ai dahi moni dele saiolo gi Nukuoro gaia e hano mae tilo be hanu dangada Kosrae gi bale ange e hagadonu ai dana beebaa ni muna Kosrae e sisi ai.

Muli mai gai dahi moni dele saiolo gu dau mai gaia tigi gidee hanu bale gai e dahi hogi misineli i hongga de moni nei dono ingoo go misineli Channon. Taane nei go goia tagi o suguulu daumaha i Kosrae. Gai Siagoi ga ssili ange be maua laa de gaamai dahi dangada e haga suguulu ai de gau Nukuoro ide longo danuaa. Gai ga haiange gi Siagoi gi hilia dahi dangada mai Nukuoro e hanadu e suguulu ide Baibele i Kosrae. Go goia e ahe mai ga hagasuguulu de gau Nukuoro. Delaa ai Siagoi ga hili ange ailoo a Lekka go tama daane madua a Kandeisi, de hine hodooligi de masavaa laa. Gu hano ai loo a Lekka ga suguulu i Kosrae e ono ngadau.

Gai de masavaa nei Siagoi goi duudagi donu huu de ago de longo danuaa i Nukuoro i ana mee mau, e dee gahami tee dohu danuaa gai ia e hagammahi gi ana mee mau.

Ide ngadau 1902 gai dahi Porose misineli absasa dono ingoo go misineli Thomas Gray ne hanage e hagadabu Kandeisi de hodooligi ahine. Gai de masavaa nei a Lekka goi suguulu ai huu i Kosrae. Gai hanu hogi dangada a Siagoi gu ago laa, gilaadeu goi tali ange huu dahi misineli gi hagadabu ina hogi gilaadeu. Deenei ai misineli Thomas Gray, ga hagadabu de hodooligi ahine mae 42. dangada matali ia. De masavaa nei gai gu soa donu de gau Nukuoro gu maalama magu huuhuli gee io laadeu eidu ilote gohu. De ngadau

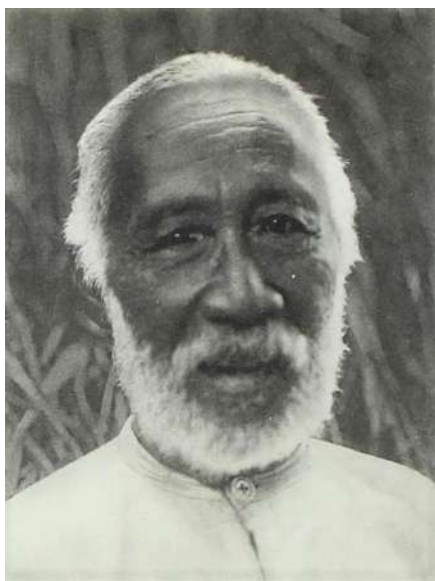
1905, mi gu duu age loo ide Malae, de momme donu odenga diinongaa eidu nogo taagodo ai. Denei ai loo de taamada ode hagahaihegau de longo danuaa i Nukuoro ga dae ai gide ahemai hogi o Lekka ga duudagi ga dae mai nei loo gide gau agoago o masavaa go iainei.



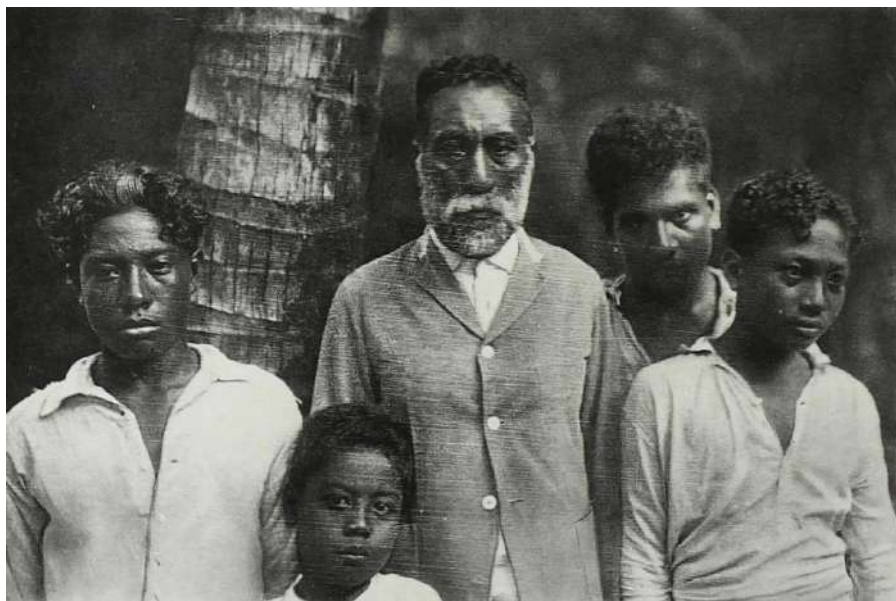
Tagodo ode aduhale e nnoho ai dangada ide masavaa ode gau Saemani (1910).



Tankiaitu (1910).



Mauatoto (1910).



*Teanga i teungaalodo gai de gau ange laa go Teatu, Fereas, Tara
ma Tamaro (1910).*



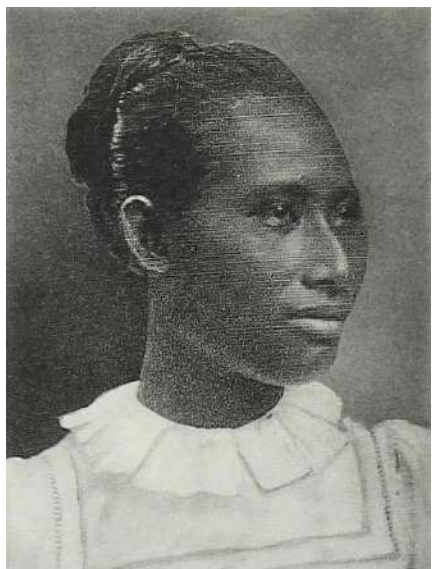
Hakruru aama Arioru (1910).



Hakasek (1910).



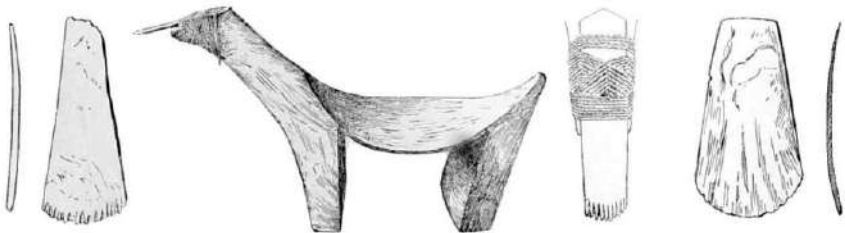
Dehine (1910).



Teikio (1910).

Image Credits

- Cover Google Earth imaginary.
2 Drafted by Takuya Nagaoka.
4 Drafted by Takuya Nagaoka, partly based on Carson 2014:2, Figure 1.1.
5 Drafted by Takuya Nagaoka.
7 Eilers 1934:272, Figure 187.
9 Eilers 1934:276-277, Figures 195-200.
14 Eilers 1934:278-279, Figure 201-204.
15 Drafted by Takuya Nagaoka, based on Green 1970:27, Figure 5.
17 Eilers 1934:235, Figure 727.
18 Eilers 1934:237-238, Figures 104 and 105.
20 Eilers 1934:239, Figures 106-113.
21 Eilers 1934:237, Figure 102.
22 Eilers 1934:241, Figure 116.
22 Eilers 1934:242, Figure 117.
23 Eilers 1934:252, Figure 138-141.
25 Eilers 1934:251, Figure 135-136.
26 Jeschke 2013:231, Figure 94, redrafted by Takuya Nagaoka.
27 Eilers 1934:317, Figure 209.
28 Eilers 1934:260-261, Figures 156 and 157.
29 Eilers 1934:258, Figure 152.
30 Eilers 1934:231, Figure 99.
31 Eilers 1934, Nukuoro, Plate 7.
32 Eilers 1934:250, Figures 132-134.
33 Eilers 1934:273, Figures 190-194.
34 Eilers 1934:271, Figures 184-186.
35 Eilers 1934:297, Figures 206.
35 Eilers 1934:237, Figures 103.
36 Eilers 1934:261-264, Figures 158-164.
36 Eilers 1934:265, Figures 168-170.
37 Eilers 1934:230, Figures 97 and 98.
40 Eilers 1934, Nukuoro, Plate 3.
41 Eilers 1934, Nukuoro, Plate 4.
42 Eilers 1934, Nukuoro, Plate 5.
43 Eilers 1934:26, Figures 172-174.
Back Google Earth imaginary



Duai.

This reader was developed as the first series of the Pohnpei State Department of Education's "Pohnpei Studies Reader" series in collaboration with NGO Pasifika Renaissance to enable Nukuoroan students to learn their history as part of the Pohnpei Studies curriculum.



Stanly Etse, Director, Department of Education
Pressler Martin, Chief of Curriculum and Instructions
Evenger Waltu, Pohnpei Studies Specialist



Editorial supervision: Takuya Nagaoka, NGO
Pasifika Renaissance



Financial support: UNESCO's Participation
Programme

Pohnpei
Mwoakilloa
Pingelap
Sapwuahfik

Nukuoro

Kapingamarangi